

BookletChart™

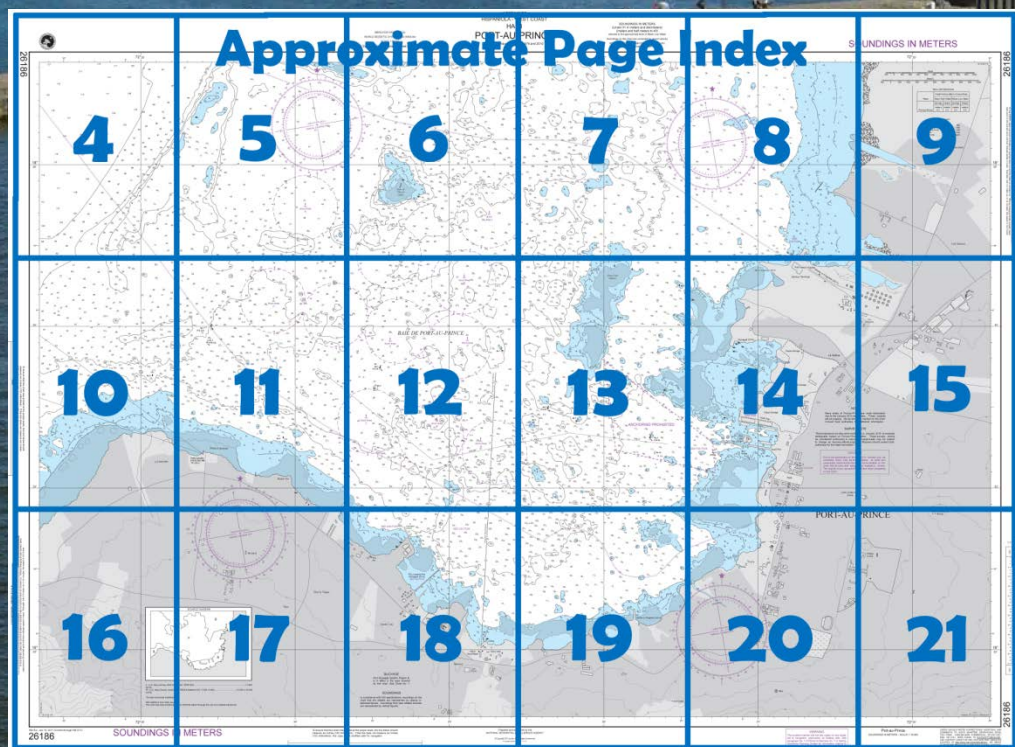
Port-au-Prince (Haiti)

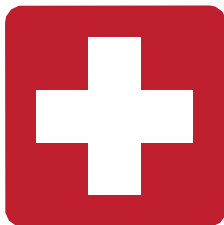
NGA Chart 26186

A reduced-scale NGA nautical chart for small boaters

When possible, use the full-size NGA chart or Electronic Nautical Chart (ENC) for navigation.

- Complete, reduced-scale nautical chart
- Print at home for free
- Convenient size
- Latest Notices to Mariners information provided
- Formatted by NOAA's Office of Coast Survey, the nation's chartmaker





EMERGENCY INFORMATION

VHF Marine Radio channels for use on the waterways:

Channel 6 – Inter-ship safety communications.

Channel 9 – Communications between boats and ship-to-coast.

Channel 13 – Navigational purposes at bridges, locks, and harbors.

Channel 16 – Emergency, distress and safety calls to Coast Guard and others, and to initiate calls to other

vessels. Contact the other vessel, agree to another channel, and then switch.

Channel 22A – Calls between the Coast Guard and the public. Severe weather warnings, hazards to navigation and safety warnings are broadcast here.

Channels 68, 69, 71, 72 and 78A – Recreational boat channels.

Getting and Giving Help — Signal other boaters using visual distress signals (flares, orange flag, lights, arm signals); whistles; horns; and on your VHF radio. You are required by law to help boaters in trouble. Respond to distress signals, but do not endanger yourself.

Distress Call Procedures

- Make sure radio is on.
- Select Channel 16.
- Press/Hold the transmit button.
- Clearly say: "MAYDAY, MAYDAY, MAYDAY."
- Also give: Vessel Name and/or Description; Position and/or Location; Nature of Emergency; Number of People on Board.
- Release transmit button.
- Wait for 10 seconds — If no response Repeat MAYDAY call.

HAVE ALL PERSONS PUT ON LIFE JACKETS!

Quick References

Nautical chart related products and information - <http://www.nauticalcharts.noaa.gov>

Interactive chart catalog - <http://www.charts.noaa.gov/InteractiveCatalog/nrnc.shtml>

Report a chart discrepancy - <http://ocsddata.ncd.noaa.gov/idrs/discrepancy.aspx>

Chart and chart related inquiries and comments - <http://ocsddata.ncd.noaa.gov/idrs/inquiry.aspx?frompage=ContactUs>

Coast Pilot online - <http://www.nauticalcharts.noaa.gov/nsd/cpdownload.htm>

Tides and Currents - <http://tidesandcurrents.noaa.gov>

Marine Forecasts - <http://www.nws.noaa.gov/om/marine/home.htm>

National Data Buoy Center - <http://www.ndbc.noaa.gov/>

NowCoast web portal for coastal conditions - <http://www.nowcoast.noaa.gov/>

National Weather Service - <http://www.weather.gov/>

National Hurricane Center - <http://www.nhc.noaa.gov/>

Pacific Tsunami Warning Center - <http://ptwc.weather.gov/>

Contact Us - <http://www.nauticalcharts.noaa.gov/staff/contact.htm>



— For the latest news from Coast Survey, follow **@NOAAcharts**



This Booklet chart has been designed for duplex printing (printed on front and back of one sheet). If a duplex option is not available on your printer, you may print each sheet and arrange them back-to-back to allow for the proper layout when viewing.

NOAA's Office of Coast Survey

The Nation's Chartmaker

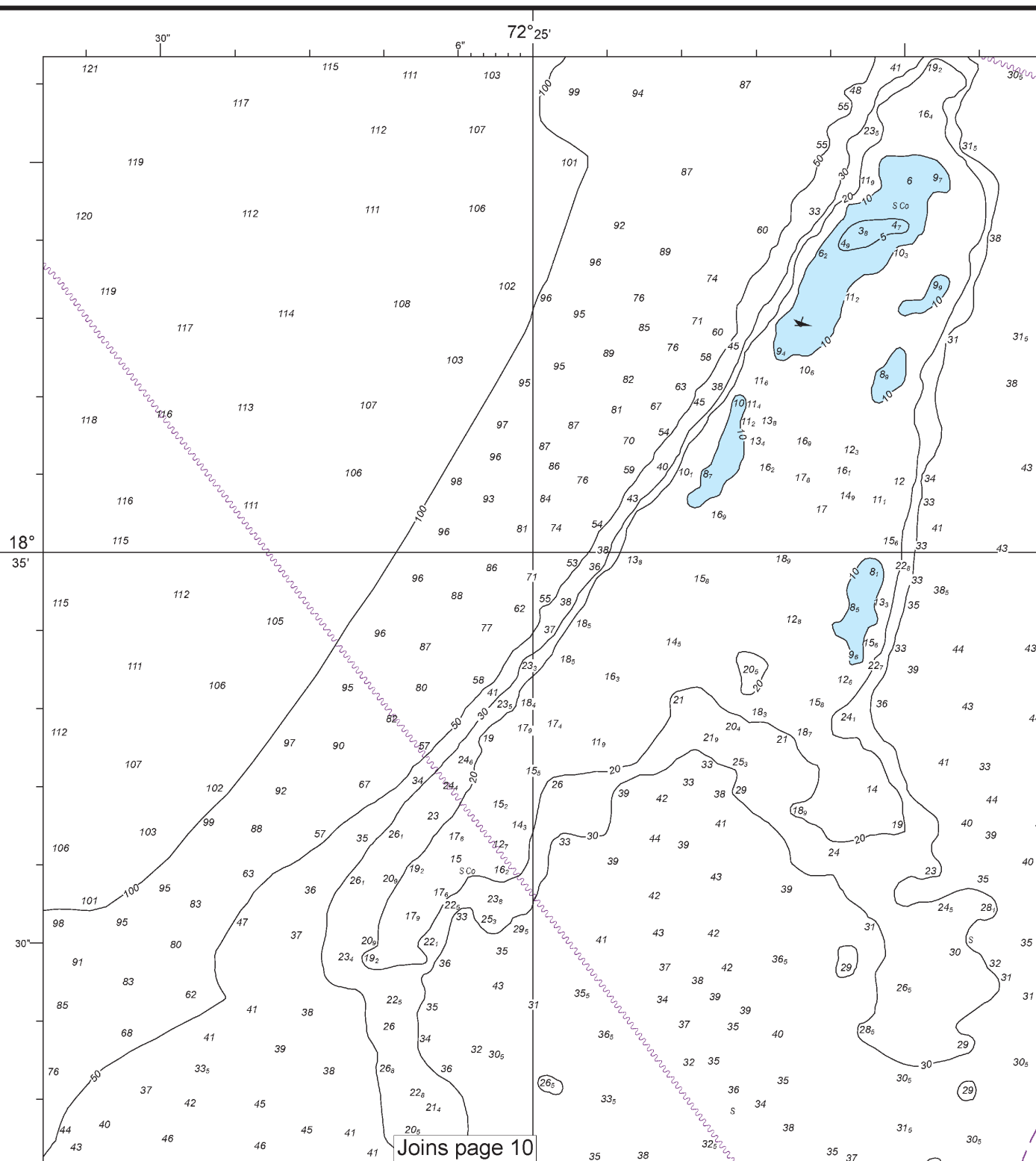
Conversion Factors			
	Known Value	Multiply By	Unknown Value
Linear	inches	25.40	millimeters
		2.540	centimeters
	centimeters	0.032808	feet
	feet	30.48	centimeters
		0.3048	meters
		0.00016458	nautical miles
	yard	0.9144	meters
	meters	3.2808	feet
		1.094	yards
		0.0005399	nautical miles
Area	statute miles	0.86897	nautical miles
		1.6093	kilometers
		1,609.3	meters
	nautical miles	1.151	statute miles
	square feet	0.0929	square meters
		0.00002296	acres
	square meters	10.764	square feet
		0.0002471	acres
	acres	4,046.9	square meters
		43,560	square feet
Depths		0.404685	hectare
	hectare	2.471054	acres
		10,000	square meters
		1.07639x10 ⁵	square feet
	fathoms	1.8288	meters
	meters	0.54681	fathoms
		3.2808	feet
	feet	0.3048	meters
	feet per second	0.5925	knots
		0.6818	miles per hour
Rate		30.48	centimeters per second
	statute miles per hour	0.8689	knots
		1.467	feet per second
		0.447	meters per second
	knots	1.151	miles per hour
		0.5144	meters per second
		1.6878	feet per second
	centimeters per second	0.01944	knots
		0.02237	miles per hour
		0.032808	feet per second
Mass	grams	0.035275	ounces
		0.002205	pounds
	ounces	28.349	grams
	pounds	0.45359	kilograms
	short tons	2,000	pounds
		0.89286	long tons
		0.9072	metric tons

Mass	long tons	2,240	pounds
		1.12	short tons
		1.016	metric tons
Volume	metric tons	1,000	kilograms
		0.9842	long tons
		1.1023	short tons
		2,204.6	pounds
	barrels (petroleum)	42	gallons (US)
		158.99	liters
	barrels (liquid, US)	31.5	gallons (US)
		26.229	gallons (British)
		119.24	liters
	gallons (US)	0.02381	barrels (petroleum)
		3.7854	liters
	liters	0.26417	gallons (US)

Measurements and Equivalencies	
Unit	Equivalency
nautical mile	1,852 meters 6,076.12 feet
statute mile	5,280 feet 1,609.3 meters 1.6093 kilometers
cable	0.1 nautical mile (CN) 720 feet (US)
fathom	6 feet 1.8288 meters
foot	0.3048 meter
inch	2.54 centimeters
meter	39.37 inches 3.281 feet 1.0936 yards
kilometer	1,000 meters
knot	1.6877 feet per second 0.5144 meters per second
miles per hour (statute)	1.466 feet per second 0.44704 meters per second
acre	43,560 square feet 4,046.82 square meters
pound (avoirdupois)	453.59 gram
gram	0.0022046 pound (avoirdupois) 0.035274 ounce
short ton	2,000 pounds
long ton	2,240 pounds
metric ton	2,204.6 pounds
kilogram	2.2 pounds
liter	1.0567 quarts
barrel (petroleum)	42 gallons (US)



26186



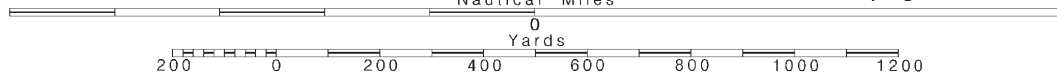
4

Note: Chart grid lines are aligned with true north.

Printed at reduced scale.

SCALE 1:10,000

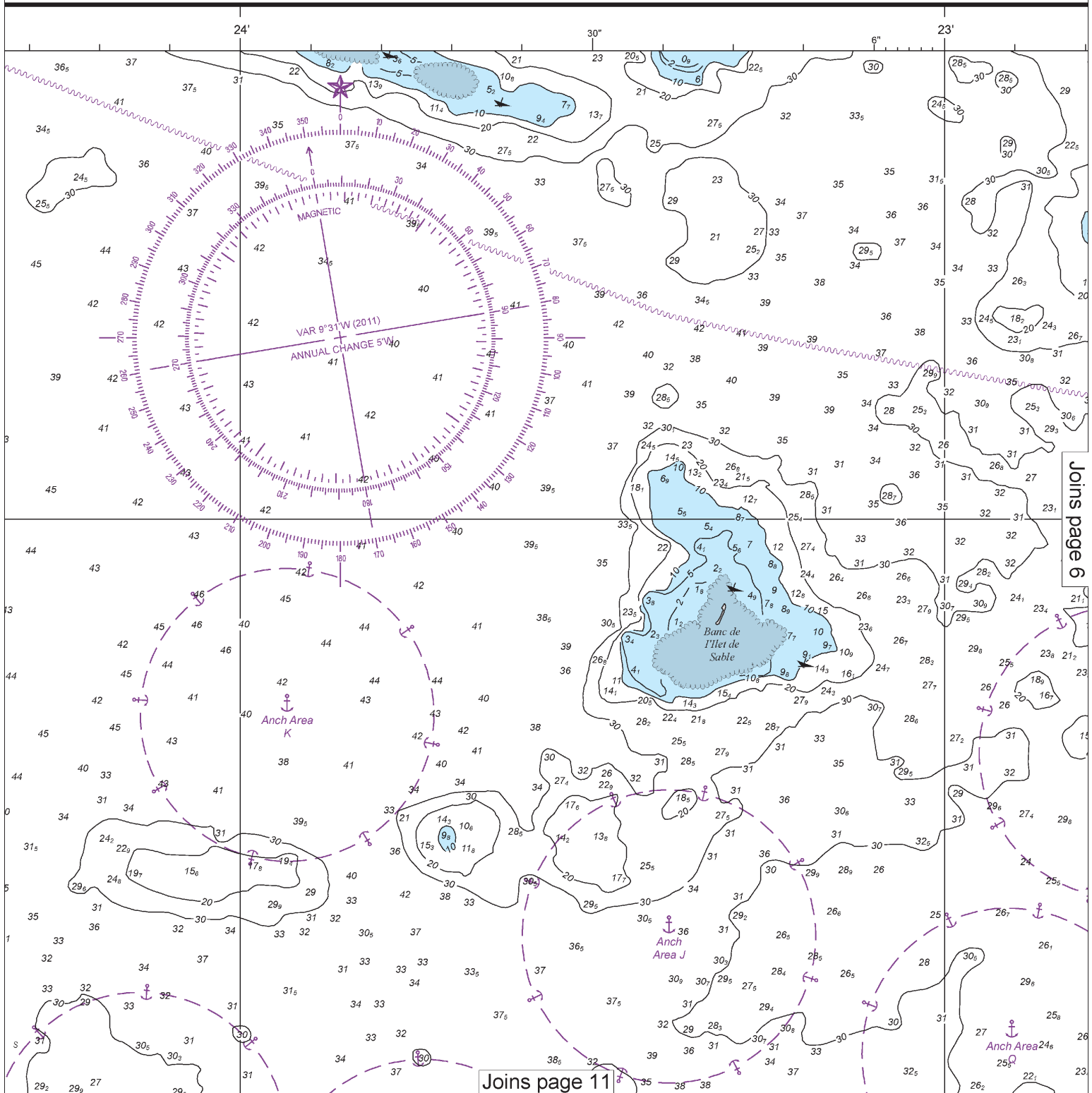
See Note on page 5.



MERCATOR PROJECTION
WORLD GEODETIC SYSTEM 1984 (WGS-84)
SCALE 1:10,000

For Symbols and Abbreviations, see Chart No. 1

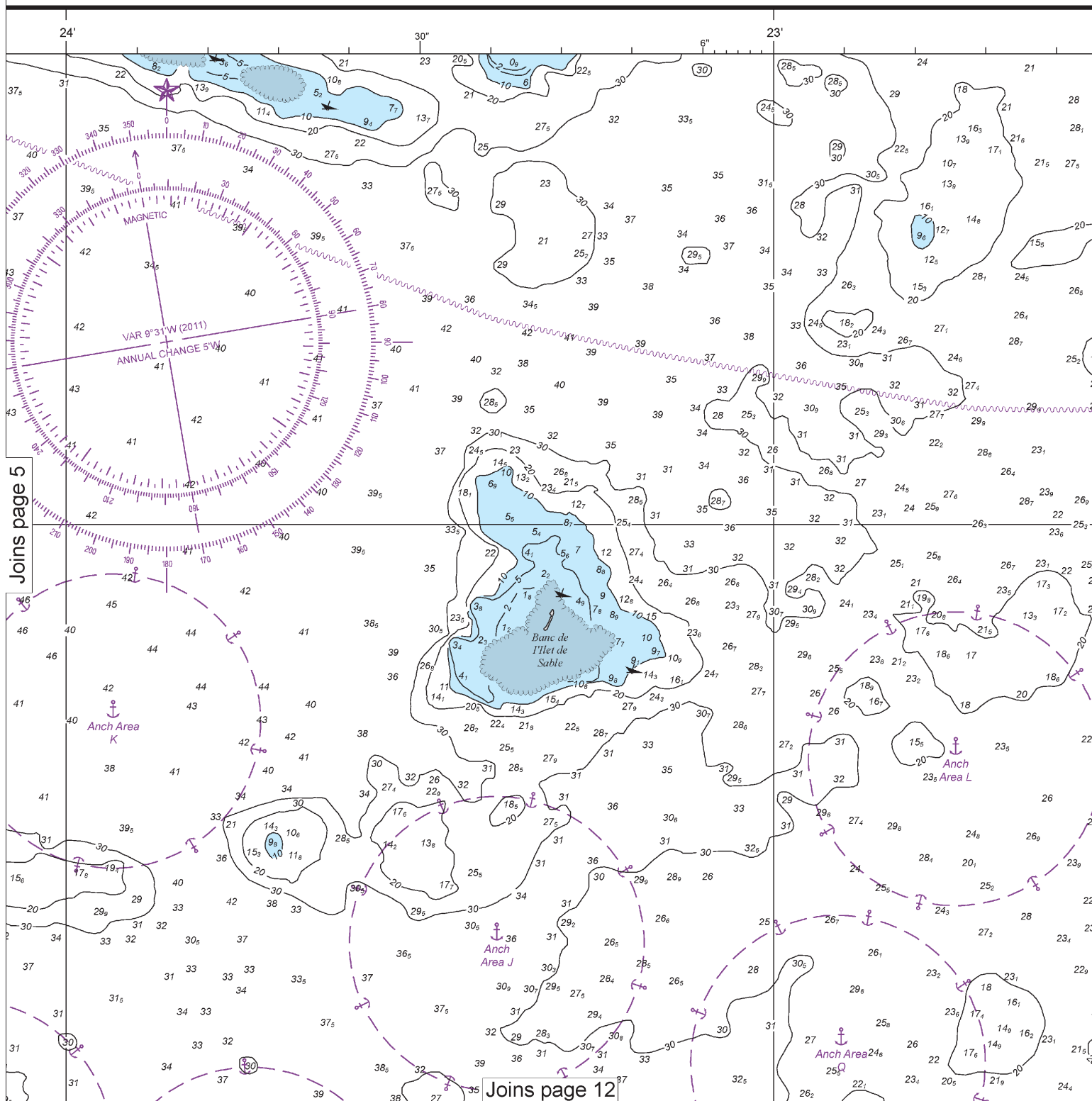
P



This BookletChart was reduced to 75% of the original chart scale.
The new scale is 1:13333. Barscales have also been reduced and
are accurate when used to measure distances in this BookletChart.

5

MERCATOR PROJECTION
WORLD GEODETIC SYSTEM 1984 (WGS-84)
SCALE 1:10,000
For Symbols and Abbreviations, see Chart No. 1

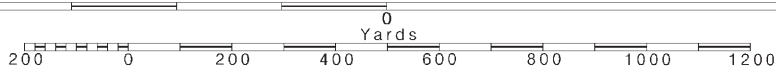


6

Note: Chart grid lines are aligned with true north.

Printed at reduced scale. — SCALE 1:10,000 —
Nautical Miles

See Note on page 5.

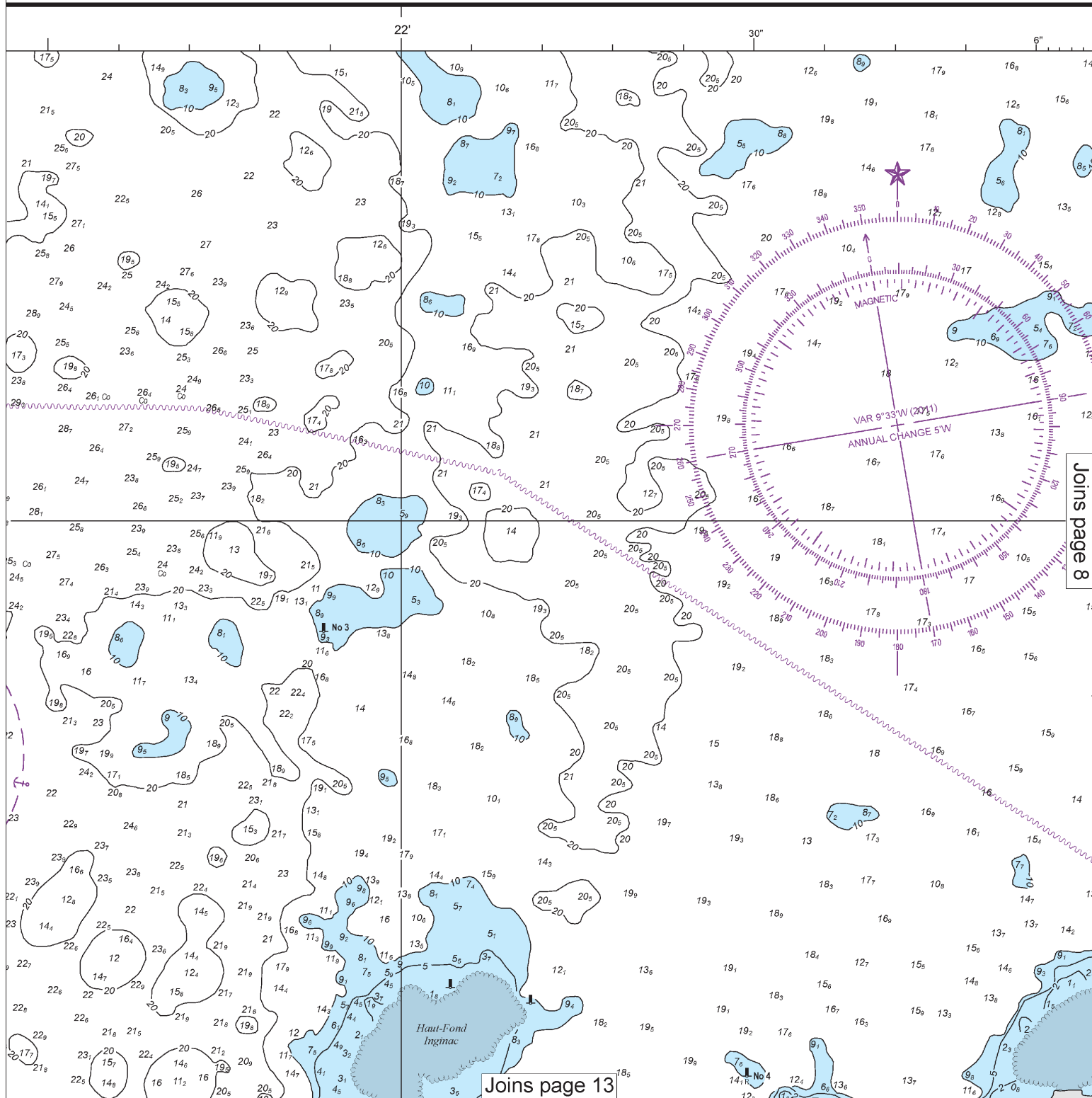


DIES
WEST COAST
TI
-PRINCE

s in 1978 and 2010

1914

SOUNDINGS IN METERS
(Under 31 in meters and decimeters)
(meters and half meters to 40)
reduced to the approximate level of Mean Low Water
Soundings on this chart are corrected for sound velocity
HEIGHTS IN METERS ABOVE MEAN SEA LEVEL
Contour interval 20 meters



Joins page 8

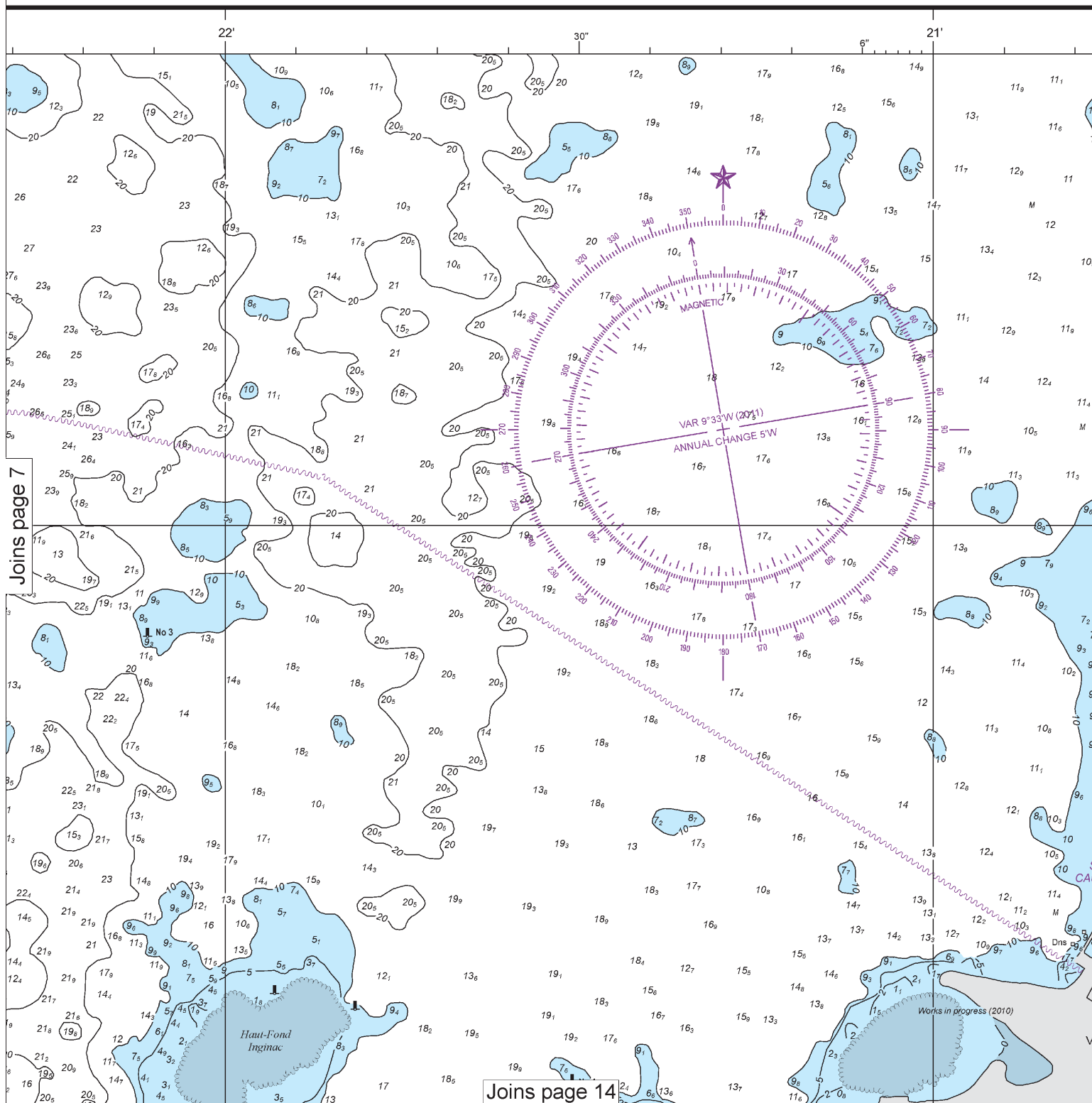
Joins page 13

SOUNDINGS IN METERS
(Under 31 in meters and decimeters)
(meters and half meters to 40)

reduced to the approximate level of Mean Low Water

Soundings on this chart are corrected for sound velocity

HEIGHTS IN METERS ABOVE MEAN SEA LEVEL
Contour interval 20 meters

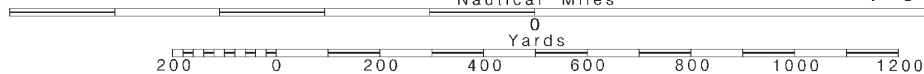


8

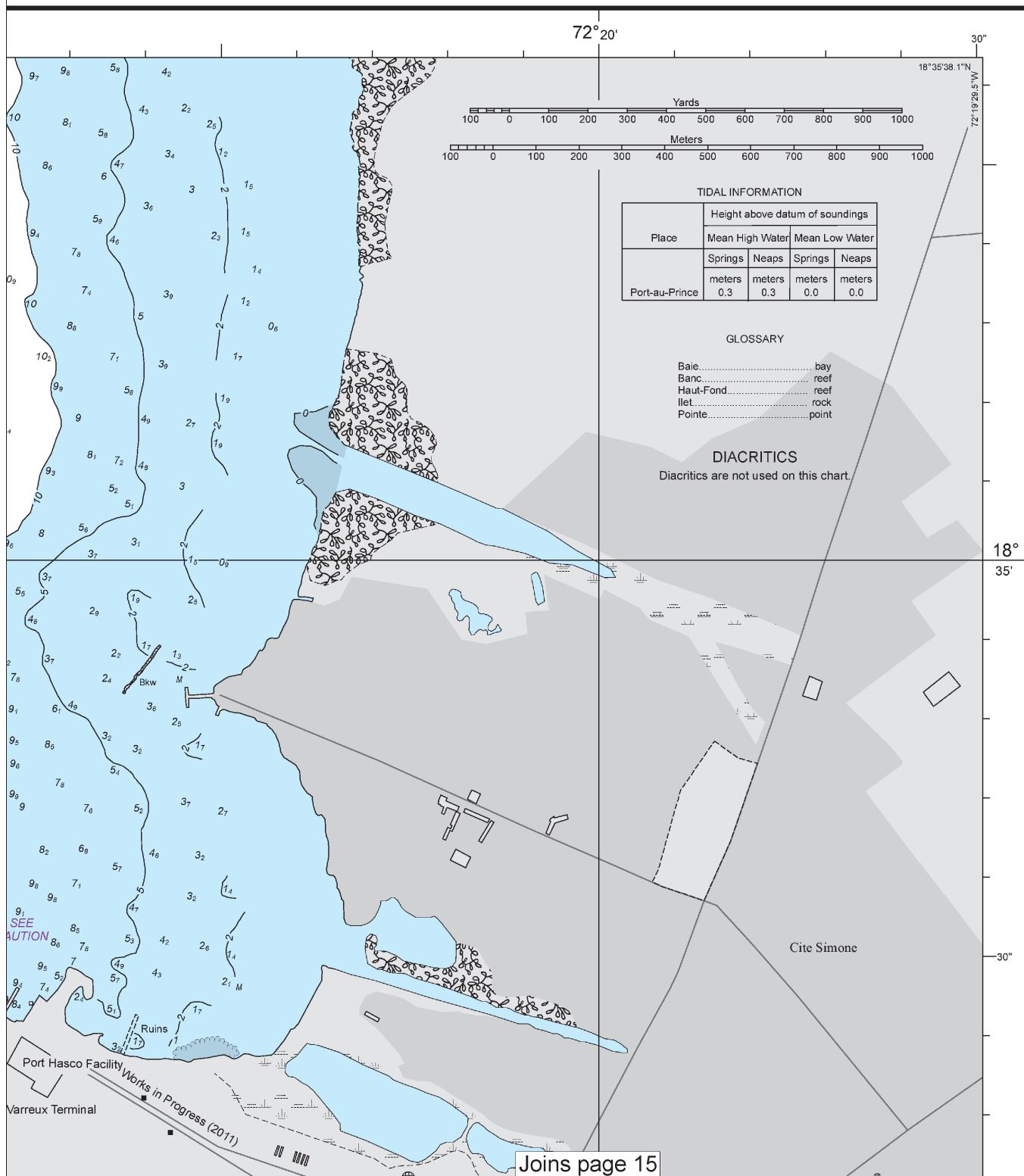
Note: Chart grid lines are aligned with true north.

Printed at reduced scale. — SCALE 1:10,000 —

See Note on page 5.

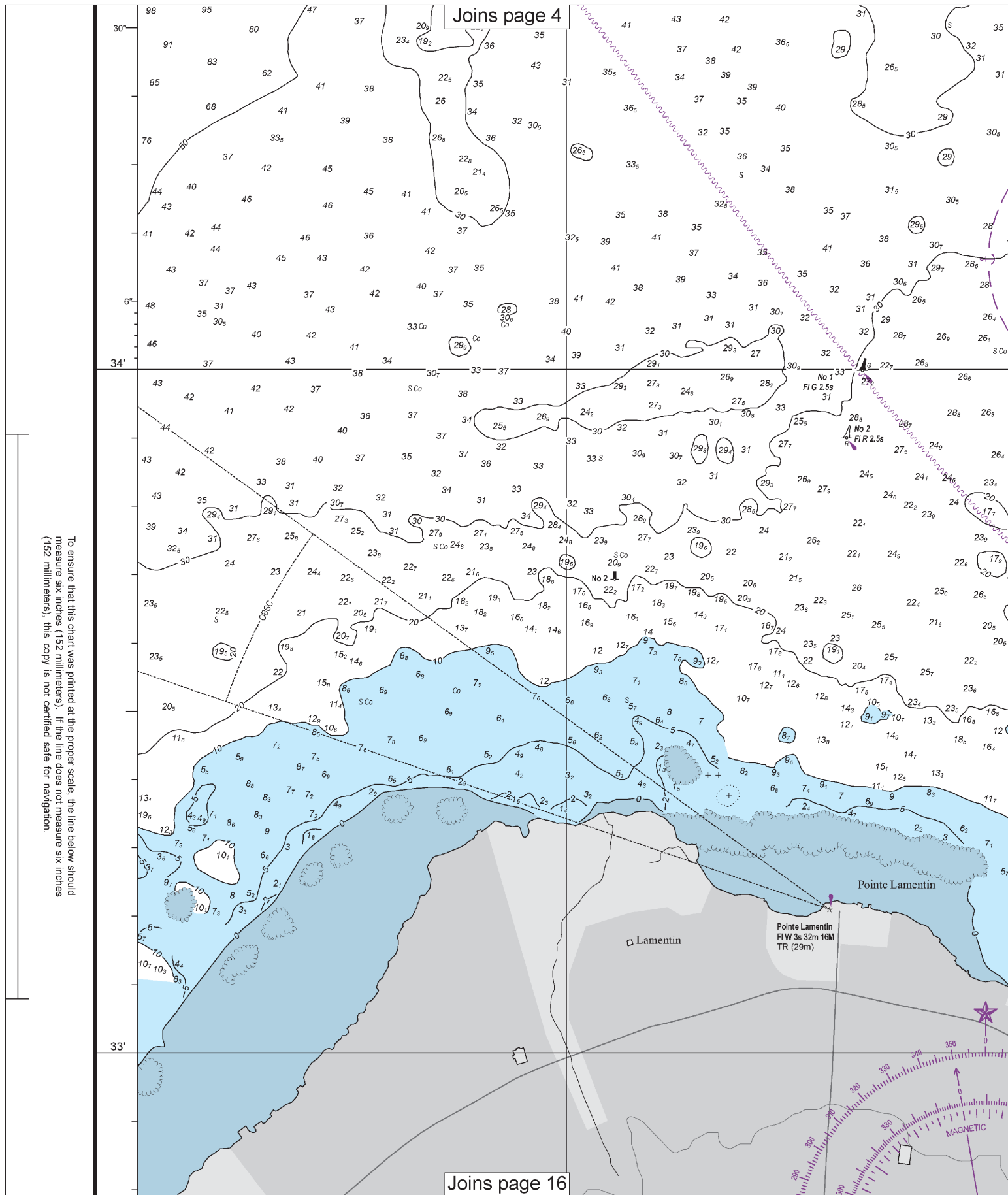


SOUNDINGS IN METERS

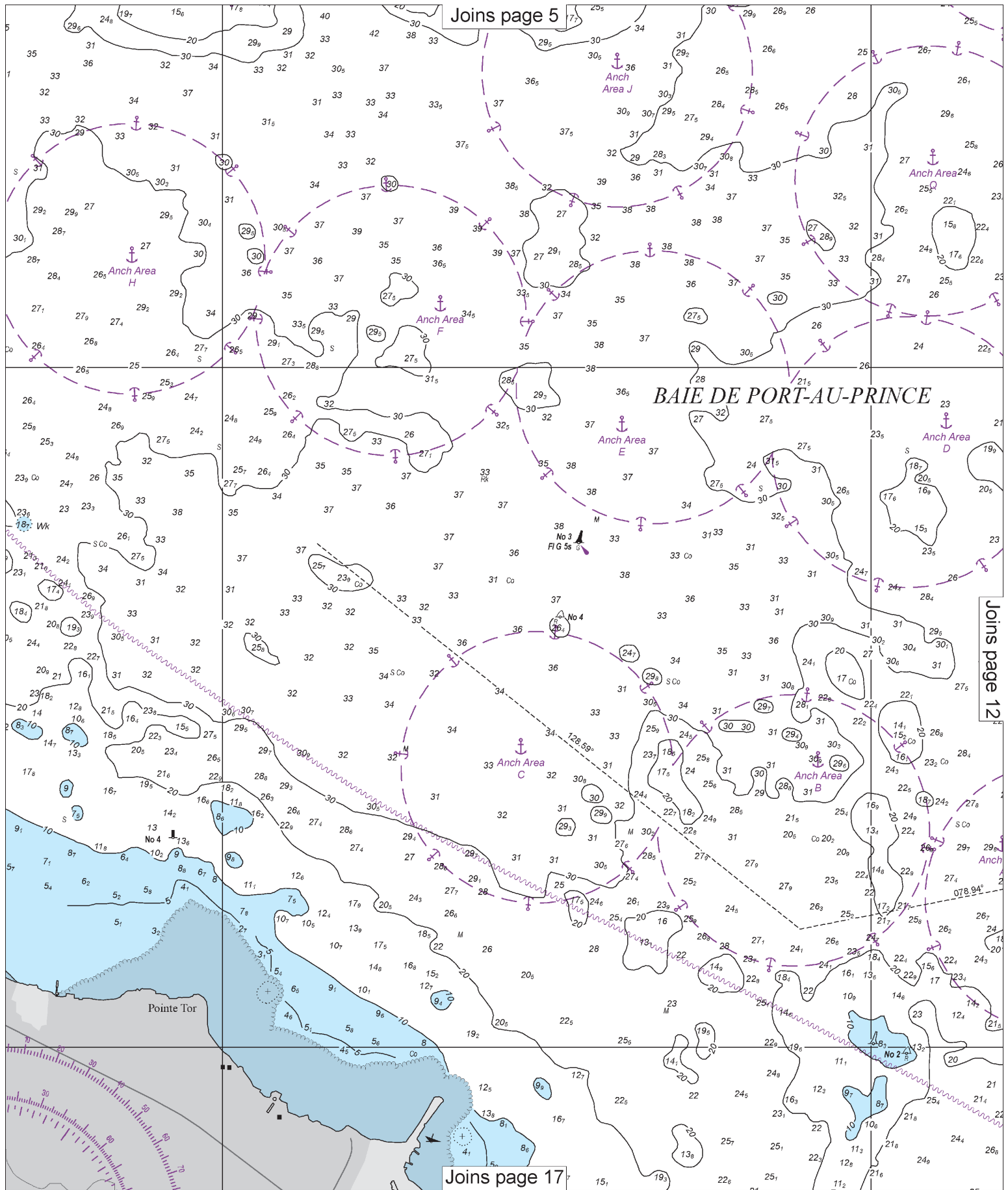


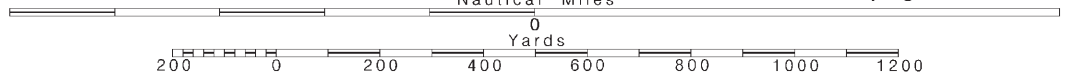
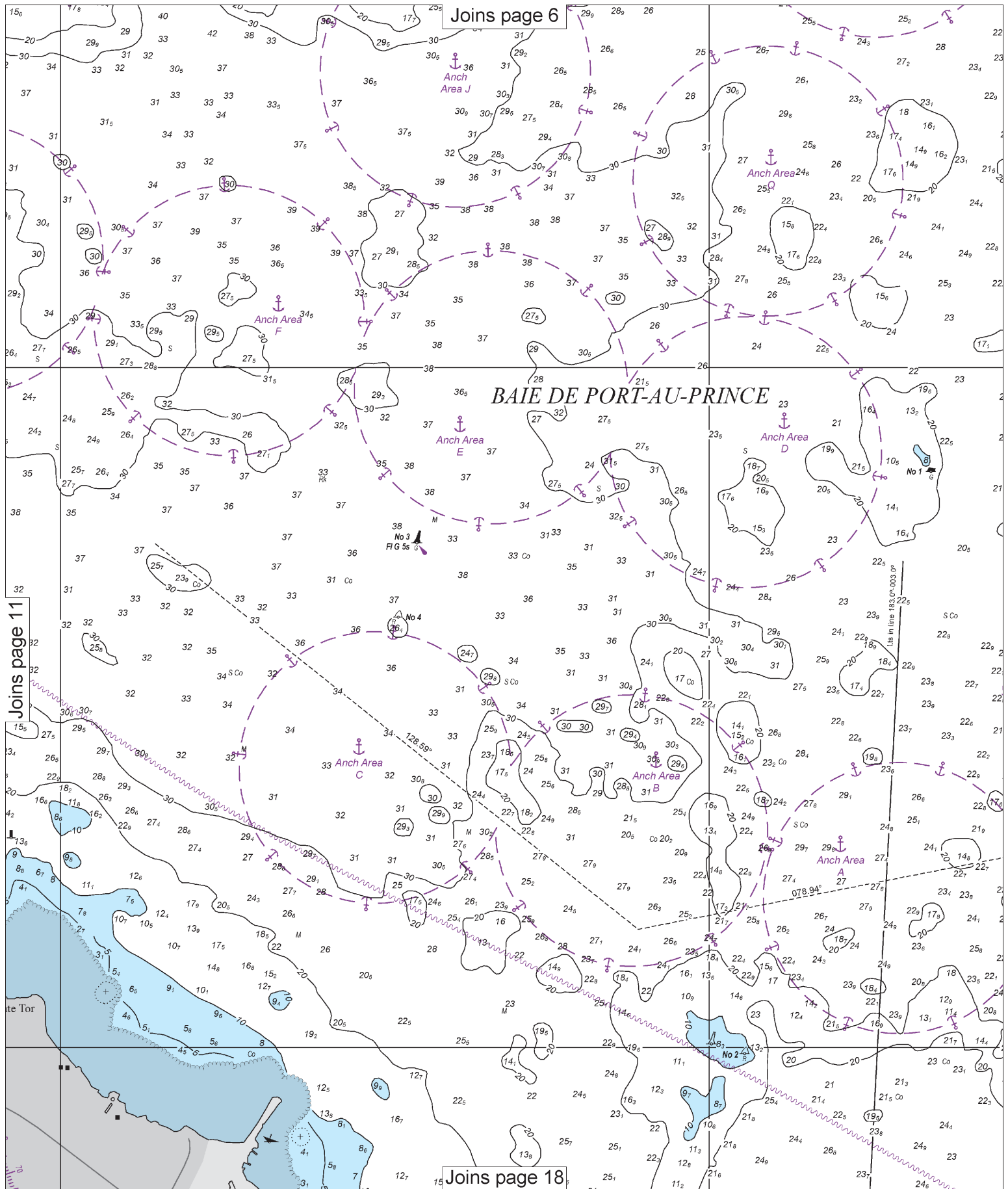
26186

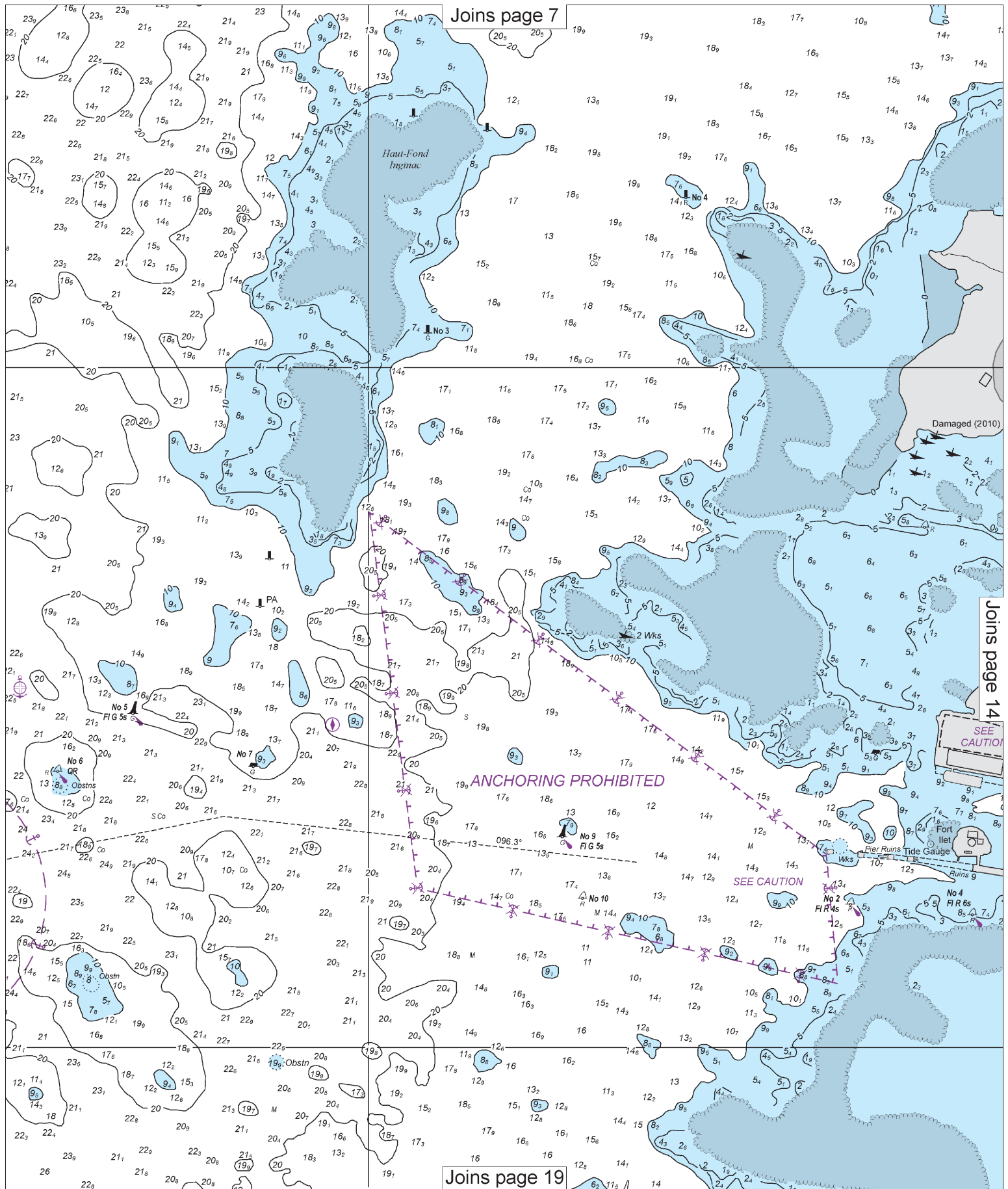


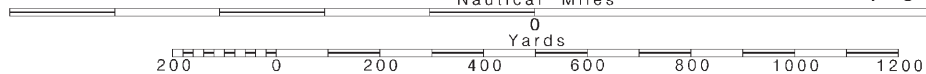


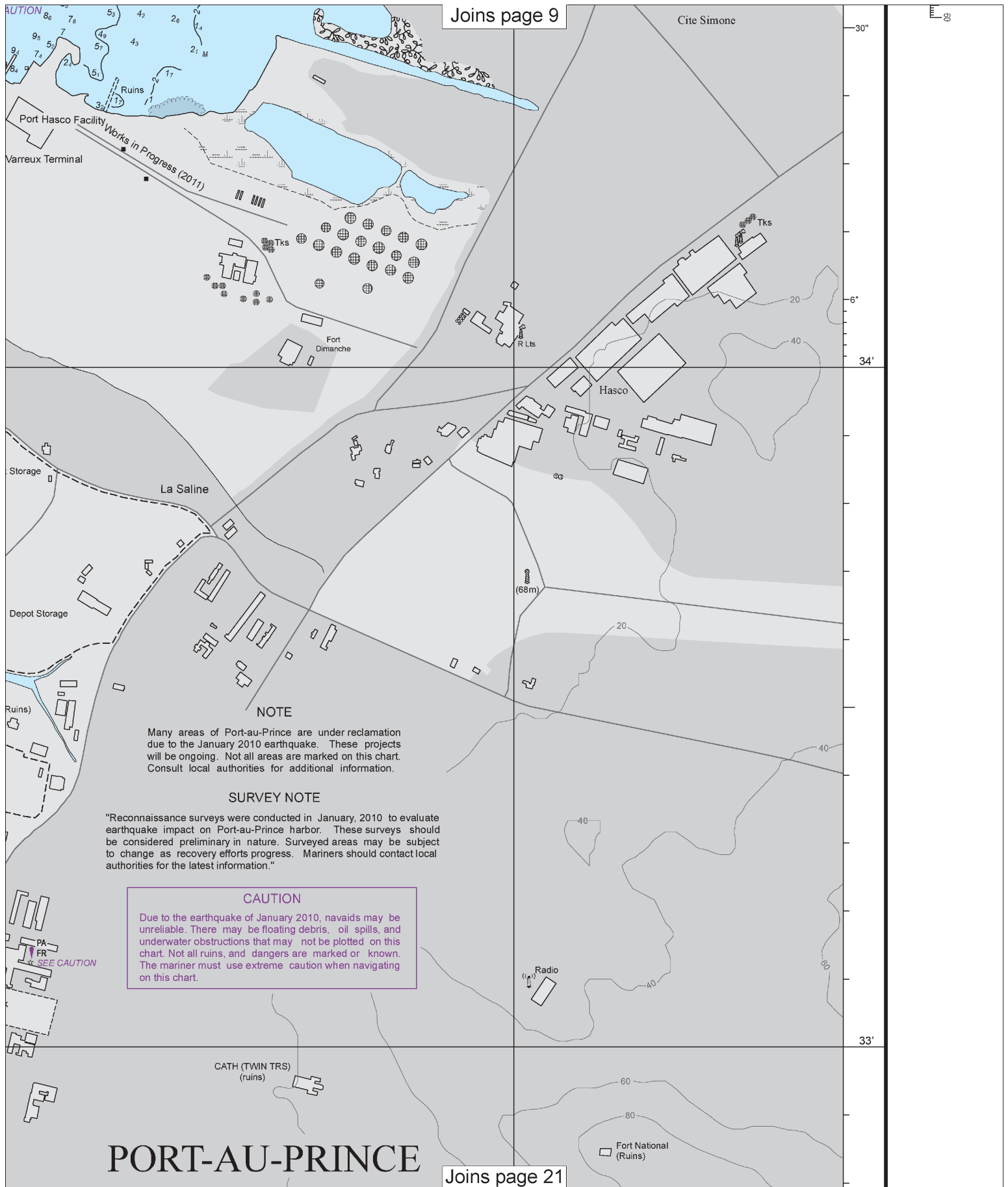
10



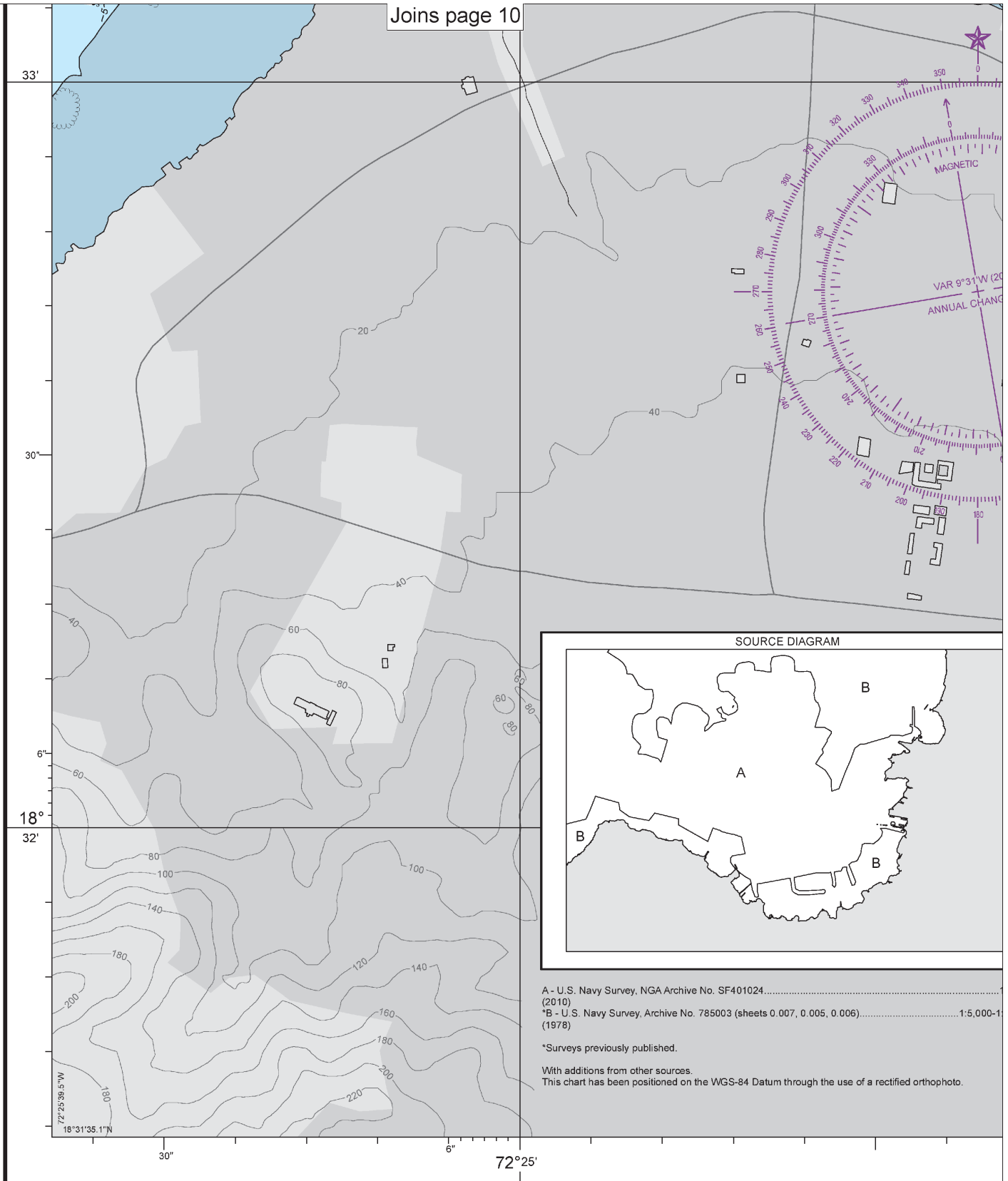
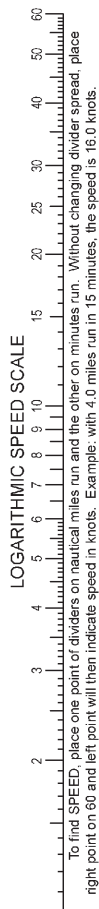








Joins page 10



19th Ed., Jan 15, 2011 (Correct through NM 3/11)

26186

SOUNDINGS IN METERS

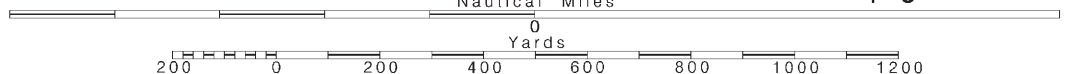
16

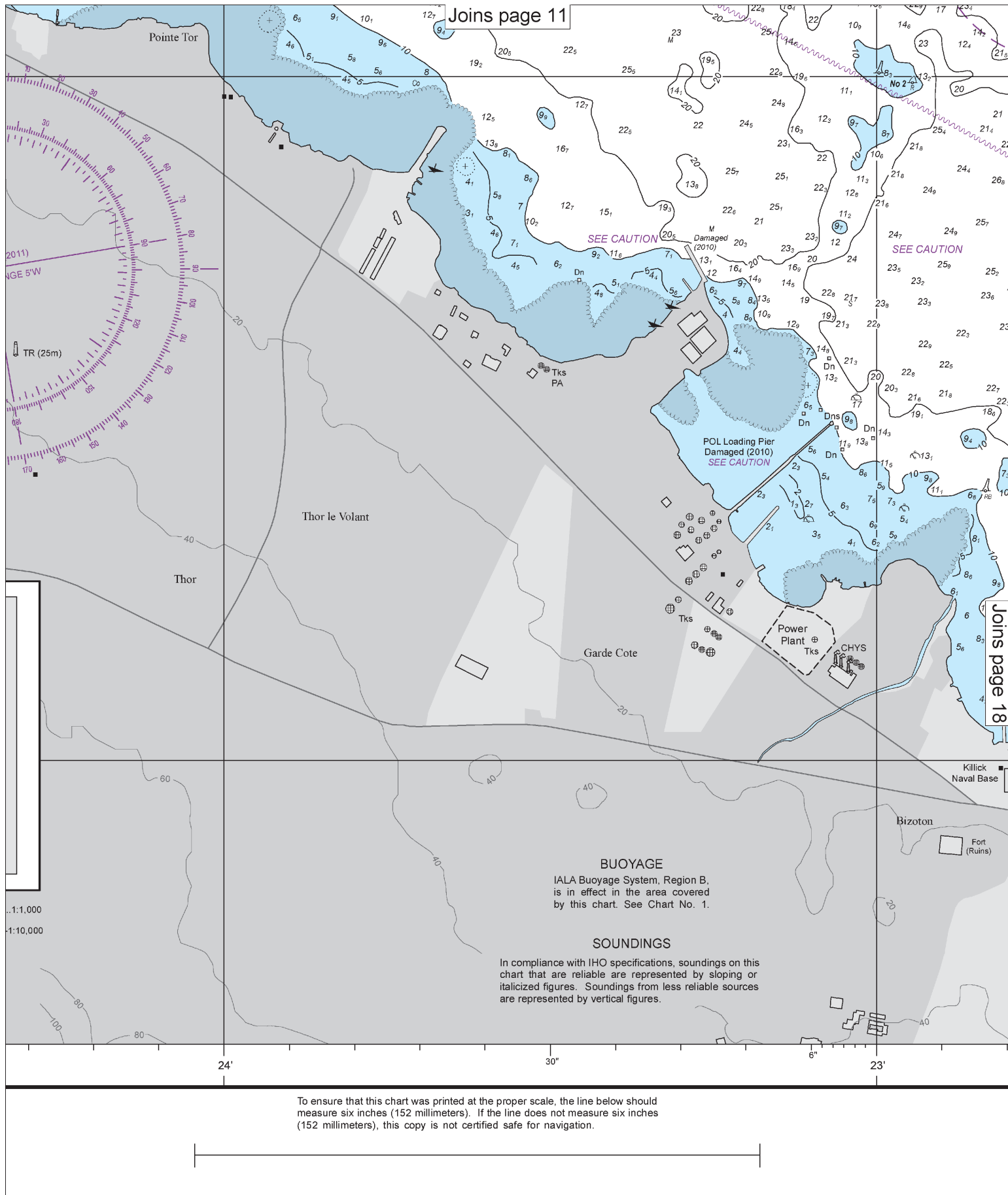
Note: Chart grid lines are aligned with true north.

Printed at reduced scale.

SCALE 1:10,000

See Note on page 5.

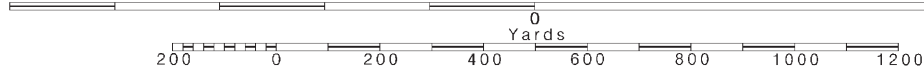


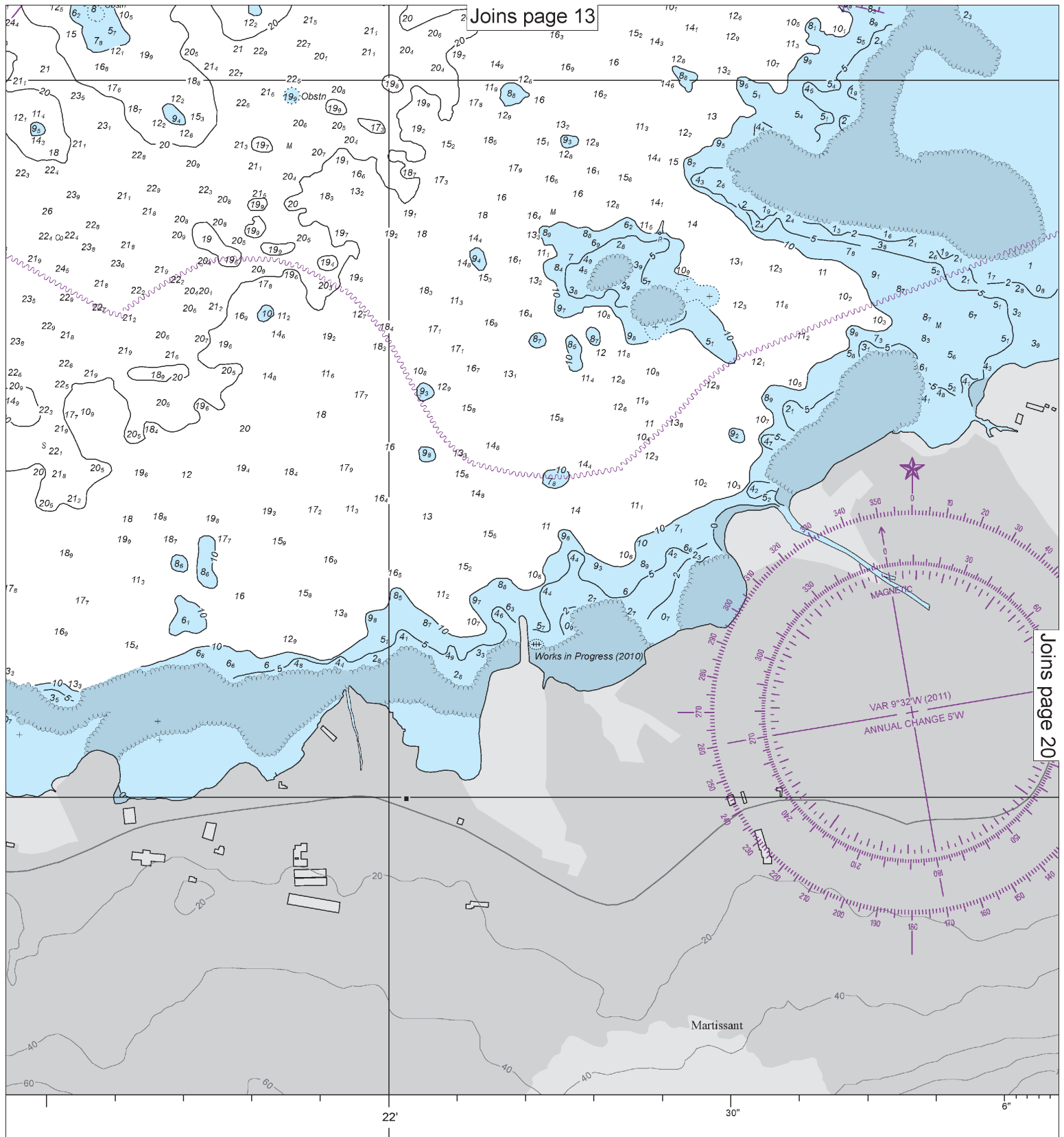




Printed at reduced scale.

See Note on page 5.



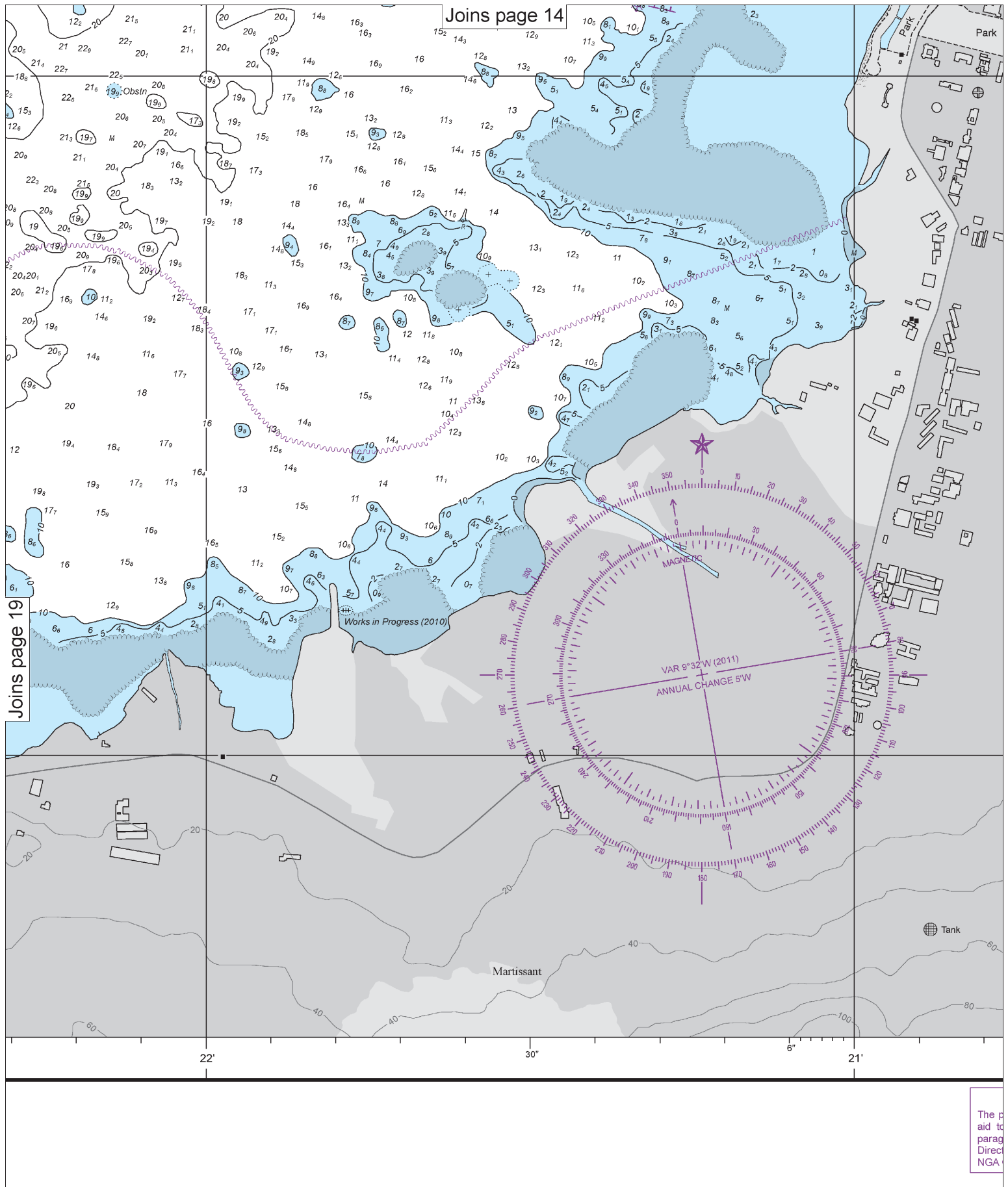


Joins page 13

Joins page 20

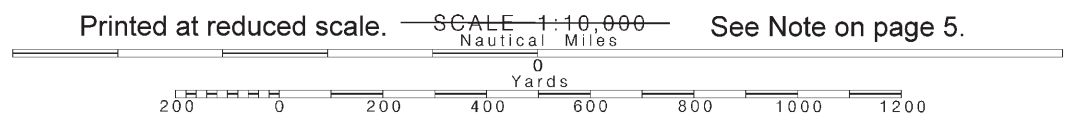
Published by the
INTELLIGENCE AGENCY

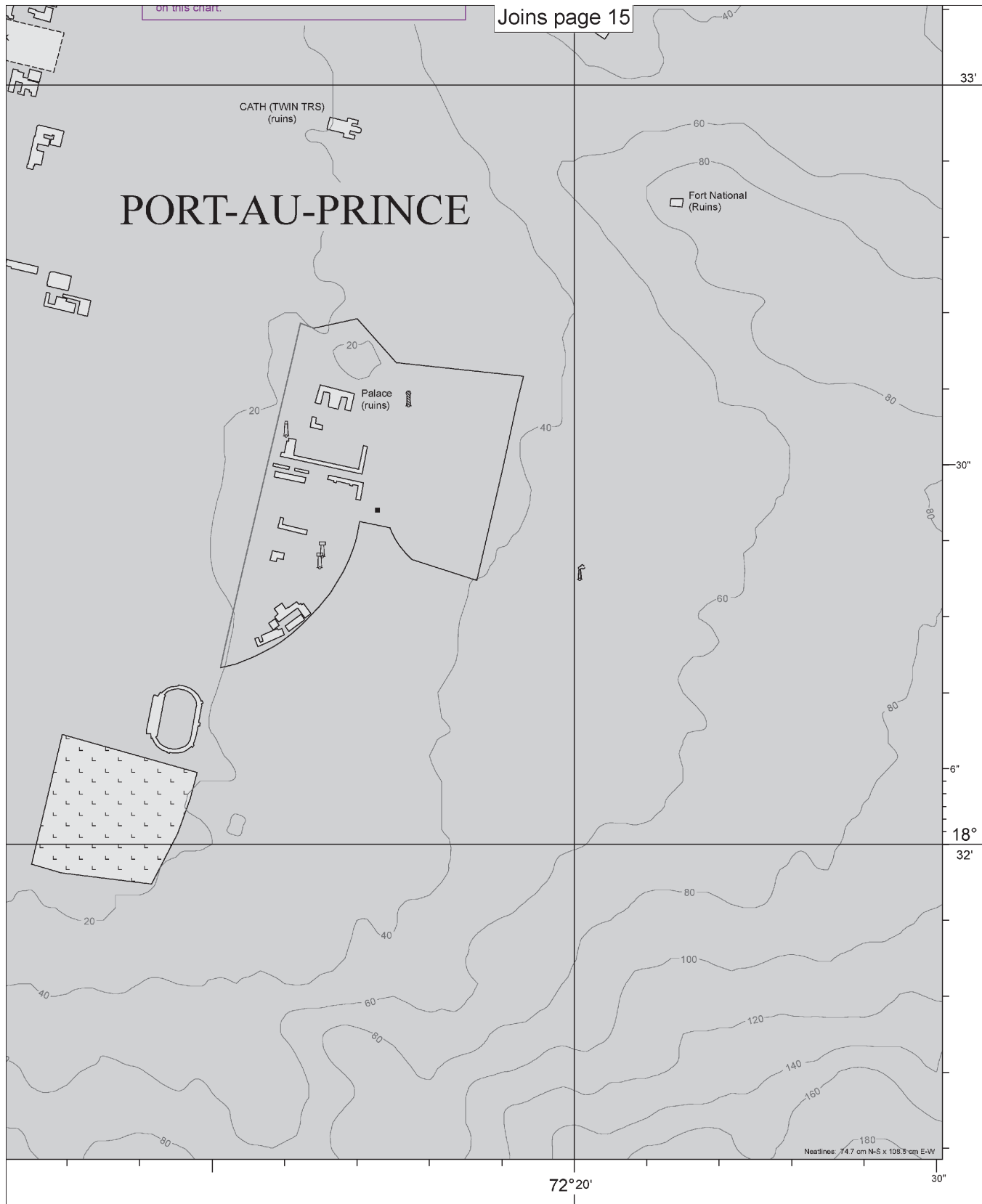
United States Government
Title 17 U.S.C.



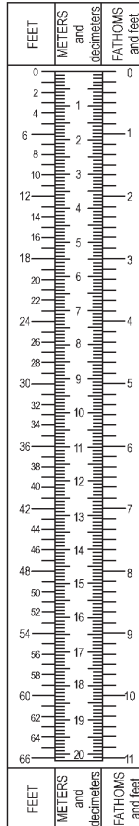
20

Note: Chart grid lines are aligned with true north.





DEPTH CONVERSION SCALE



26186

WARNING

prudent mariner will not rely solely on any single to navigation, particularly on floating aids. See graph No. 1 of Notice to Mariners No. 1 or Sailing Actions Planning Guides for information relative to A Charts.

Port-au-Prince

SOUNDINGS IN METERS - SCALE 1:10,000

USERS SHOULD REFER CORRECTIONS, ADDITIONS, AND COMMENTS TO NGA'S MARITIME OPERATIONS DESK: TOLL FREE, 1-800-362-6289; COMMERCIAL, 301-227-3147; DSN, 287-3147; SEND E-MAIL TO NAVSAFETY@NGA.MIL; USE CONTACT LINKS FOR DNC AND MARITIME WEBSITES LOCATED AT <http://www.nga.mil/portal/site/dnc/>; OR WRITE TO MARITIME PRODUCTS & SERVICES DOMAIN, NATIONAL GEOSPATIAL-INTELLIGENCE AGENCY, MAIL STOP D-44, 4600 SANGAMORE ROAD, BETHESDA, MD 20816-5003.

Chart 26186 – Port-au-Prince (Haiti)

Action	Charting Label	Latitude	Longitude	Published Document
Delete	Light from buoy "5"	18° 33' 29.5" N	72° 22' 21.8" W	10/14
Delete	Light from buoy "6"	18° 33' 24.4" N	72° 22' 28.8" W	10/14
Delete	Light from buoy "9"	18° 33' 18.6" N	72° 21' 42.1" W	10/14
Delete	Buoy "2"	18° 33' 12.7" N	72° 21' 15.4" W	10/14
Delete	Buoy "4"	18° 33' 11.7" N	72° 21' 04.1" W	10/14