

BookletChartTM

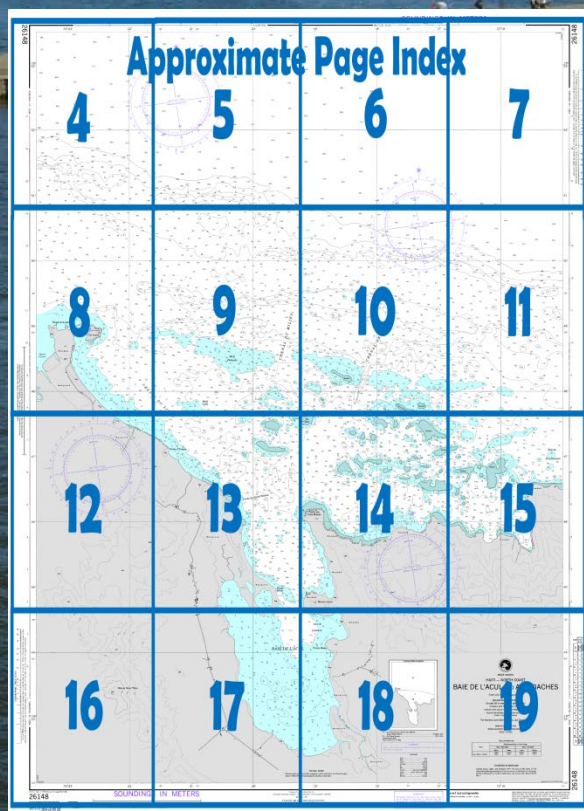
Baie de L'Acul and Approaches (Haiti)

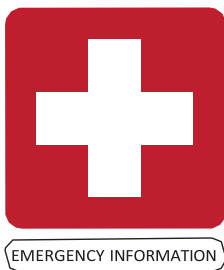
NGA Chart 26148

A reduced-scale NGA nautical chart for small boaters

When possible, use the full-size NGA chart or Electronic Nautical Chart (ENC) for navigation.

- *Complete, reduced-scale nautical chart*
- *Print at home for free*
- *Convenient size*
- *Latest Notices to Mariners information provided*
- *Formatted by NOAA's Office of Coast Survey, the nation's chartmaker*





EMERGENCY INFORMATION

VHF Marine Radio channels for use on the waterways:

Channel 6 – Inter-ship safety communications.

Channel 9 – Communications between boats and ship-to-coast.

Channel 13 – Navigational purposes at bridges, locks, and harbors.

Channel 16 – Emergency, distress and safety calls to Coast Guard and others, and to initiate calls to other

vessels. Contact the other vessel, agree to another channel, and then switch.

Channel 22A – Calls between the Coast Guard and the public. Severe weather warnings, hazards to navigation and safety warnings are broadcast here.

Channels 68, 69, 71, 72 and 78A – Recreational boat channels.

Getting and Giving Help — Signal other boaters using visual distress signals (flares, orange flag, lights, arm signals); whistles; horns; and on your VHF radio. You are required by law to help boaters in trouble. Respond to distress signals, but do not endanger yourself.

Distress Call Procedures

- Make sure radio is on.
- Select Channel 16.
- Press/Hold the transmit button.
- Clearly say: "MAYDAY, MAYDAY, MAYDAY."
- Also give: Vessel Name and/or Description; Position and/or Location; Nature of Emergency; Number of People on Board.
- Release transmit button.
- Wait for 10 seconds — If no response Repeat MAYDAY call.

HAVE ALL PERSONS PUT ON LIFE JACKETS!

Quick References

Nautical chart related products and information - <http://www.nauticalcharts.noaa.gov>

Interactive chart catalog - <http://www.charts.noaa.gov/InteractiveCatalog/nrnc.shtml>

Report a chart discrepancy - <http://ocsddata.ncd.noaa.gov/idrs/discrepancy.aspx>

Chart and chart related inquiries and comments - <http://ocsddata.ncd.noaa.gov/idrs/inquiry.aspx?frompage=ContactUs>

Coast Pilot online - <http://www.nauticalcharts.noaa.gov/nsd/cpdownload.htm>

Tides and Currents - <http://tidesandcurrents.noaa.gov>

Marine Forecasts - <http://www.nws.noaa.gov/om/marine/home.htm>

National Data Buoy Center - <http://www.ndbc.noaa.gov/>

NowCoast web portal for coastal conditions - <http://www.nowcoast.noaa.gov/>

National Weather Service - <http://www.weather.gov/>

National Hurricane Center - <http://www.nhc.noaa.gov/>

Pacific Tsunami Warning Center - <http://ptwc.weather.gov/>

Contact Us - <http://www.nauticalcharts.noaa.gov/staff/contact.htm>



— For the latest news from Coast Survey, follow **@NOAAcharts**



This Booklet chart has been designed for duplex printing (printed on front and back of one sheet). If a duplex option is not available on your printer, you may print each sheet and arrange them back-to-back to allow for the proper layout when viewing.

NOAA's Office of Coast Survey

The Nation's Chartmaker

Conversion Factors			
	Known Value	Multiply By	Unknown Value
Linear	inches	25.40	millimeters
		2.540	centimeters
	centimeters	0.032808	feet
	feet	30.48	centimeters
		0.3048	meters
		0.00016458	nautical miles
	yard	0.9144	meters
	meters	3.2808	feet
		1.094	yards
		0.0005399	nautical miles
Area	statute miles	0.86897	nautical miles
		1.6093	kilometers
		1,609.3	meters
	nautical miles	1.151	statute miles
	square feet	0.0929	square meters
		0.00002296	acres
	square meters	10.764	square feet
		0.0002471	acres
	acres	4,046.9	square meters
		43,560	square feet
Depths		0.404685	hectare
	hectare	2.471054	acres
		10,000	square meters
		1.07639x10 ⁵	square feet
	fathoms	1.8288	meters
	meters	0.54681	fathoms
		3.2808	feet
	feet	0.3048	meters
	feet per second	0.5925	knots
		0.6818	miles per hour
Rate		30.48	centimeters per second
	statute miles per hour	0.8689	knots
		1.467	feet per second
		0.447	meters per second
	knots	1.151	miles per hour
		0.5144	meters per second
		1.6878	feet per second
	centimeters per second	0.01944	knots
		0.02237	miles per hour
		0.032808	feet per second
Mass	grams	0.035275	ounces
		0.002205	pounds
	ounces	28.349	grams
	pounds	0.45359	kilograms
	short tons	2,000	pounds
		0.89286	long tons
		0.9072	metric tons

Mass	long tons	2,240	pounds
		1.12	short tons
		1.016	metric tons
Volume	metric tons	1,000	kilograms
		0.9842	long tons
		1.1023	short tons
		2,204.6	pounds
	barrels (petroleum)	42	gallons (US)
		158.99	liters
	barrels (liquid, US)	31.5	gallons (US)
		26.229	gallons (British)
		119.24	liters
	gallons (US)	0.02381	barrels (petroleum)
		3.7854	liters
	liters	0.26417	gallons (US)

Measurements and Equivalencies	
Unit	Equivalency
nautical mile	1,852 meters 6,076.12 feet
statute mile	5,280 feet 1,609.3 meters 1.6093 kilometers
cable	0.1 nautical mile (CN) 720 feet (US)
fathom	6 feet 1.8288 meters
foot	0.3048 meter
inch	2.54 centimeters
meter	39.37 inches 3.281 feet 1.0936 yards
kilometer	1,000 meters
knot	1.6877 feet per second 0.5144 meters per second
miles per hour (statute)	1.466 feet per second 0.44704 meters per second
acre	43,560 square feet 4,046.82 square meters
pound (avoirdupois)	453.59 gram
gram	0.0022046 pound (avoirdupois) 0.035274 ounce
short ton	2,000 pounds
long ton	2,240 pounds
metric ton	2,204.6 pounds
kilogram	2.2 pounds
liter	1.0567 quarts
barrel (petroleum)	42 gallons (US)

26148

19°
53'

YARDS (IN THOUSANDS)

17

52'

16

15

51'

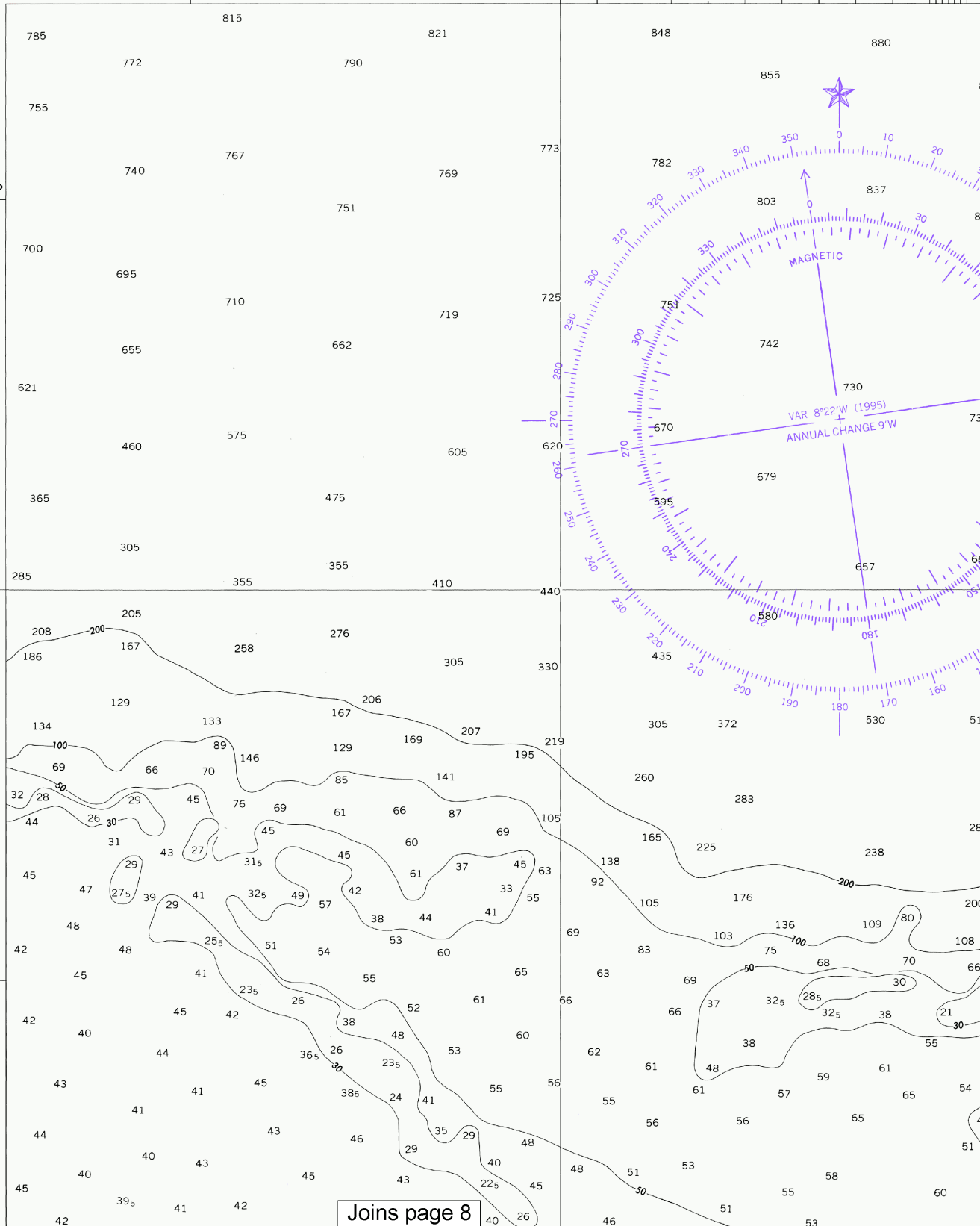
14

72°23'

22'

30"

21' 54"



Joins page 8

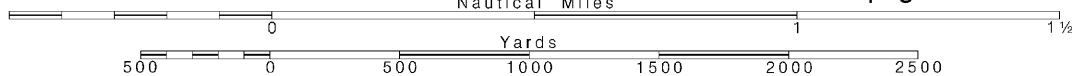
4

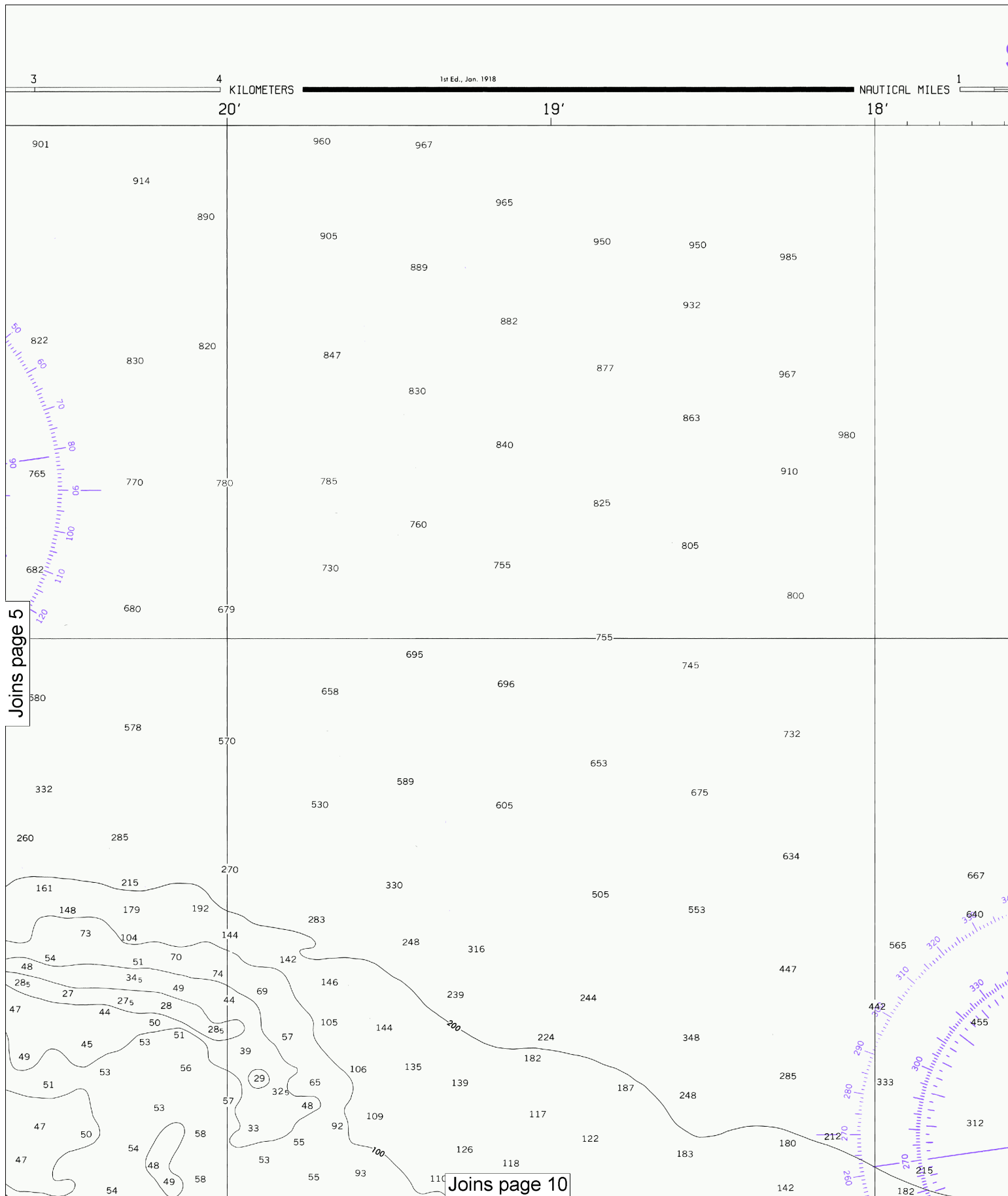
Note: Chart grid lines are aligned with true north.

Printed at reduced scale.

SCALE 1:20,000
Nautical Miles

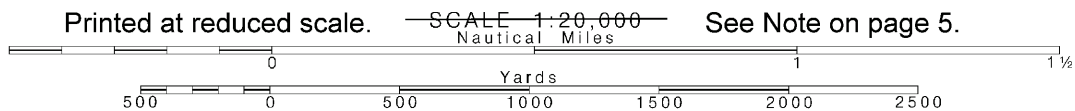
See Note on page 5.



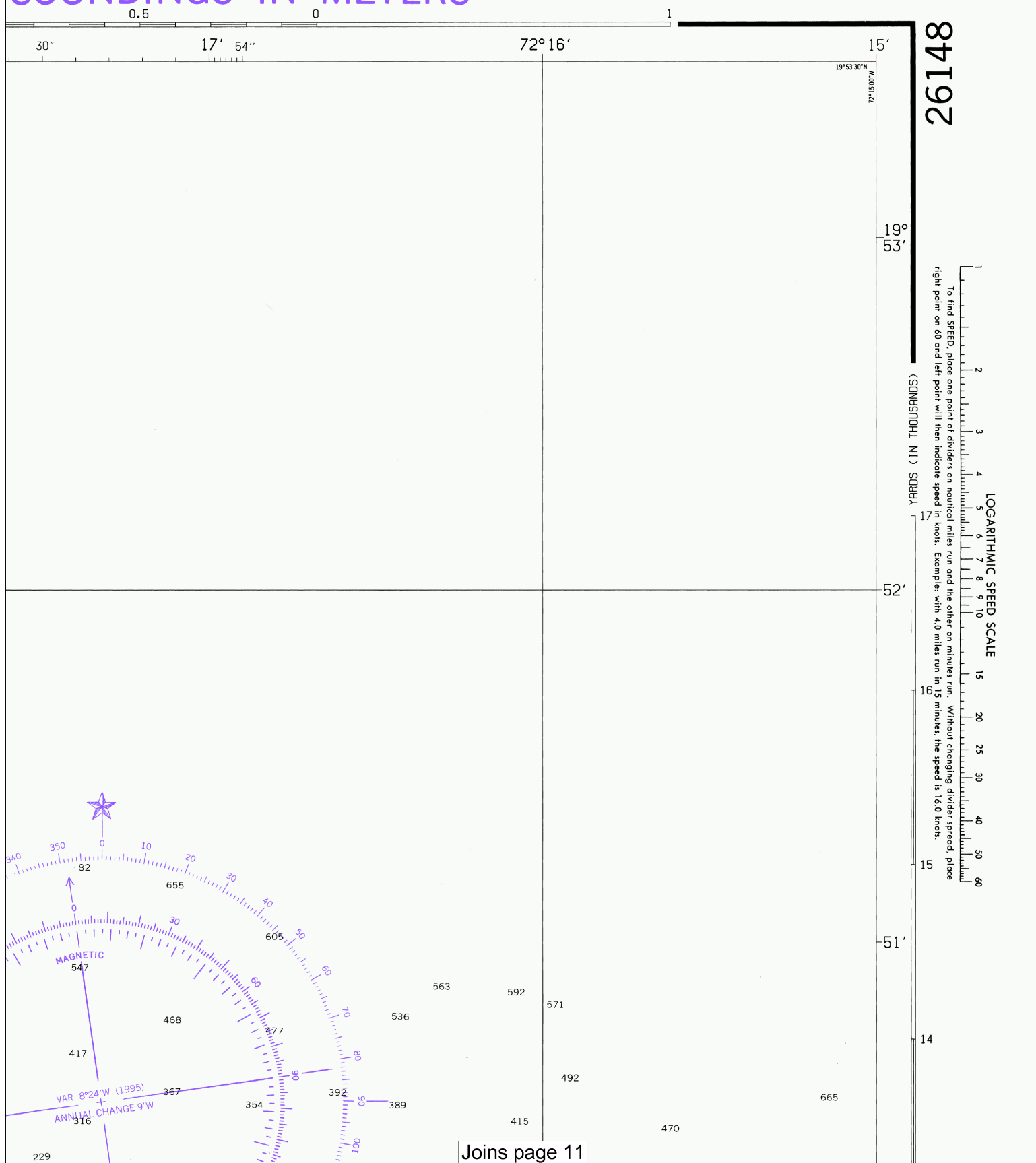


6

Note: Chart grid lines are aligned with true north.



SOUNDINGS IN METERS

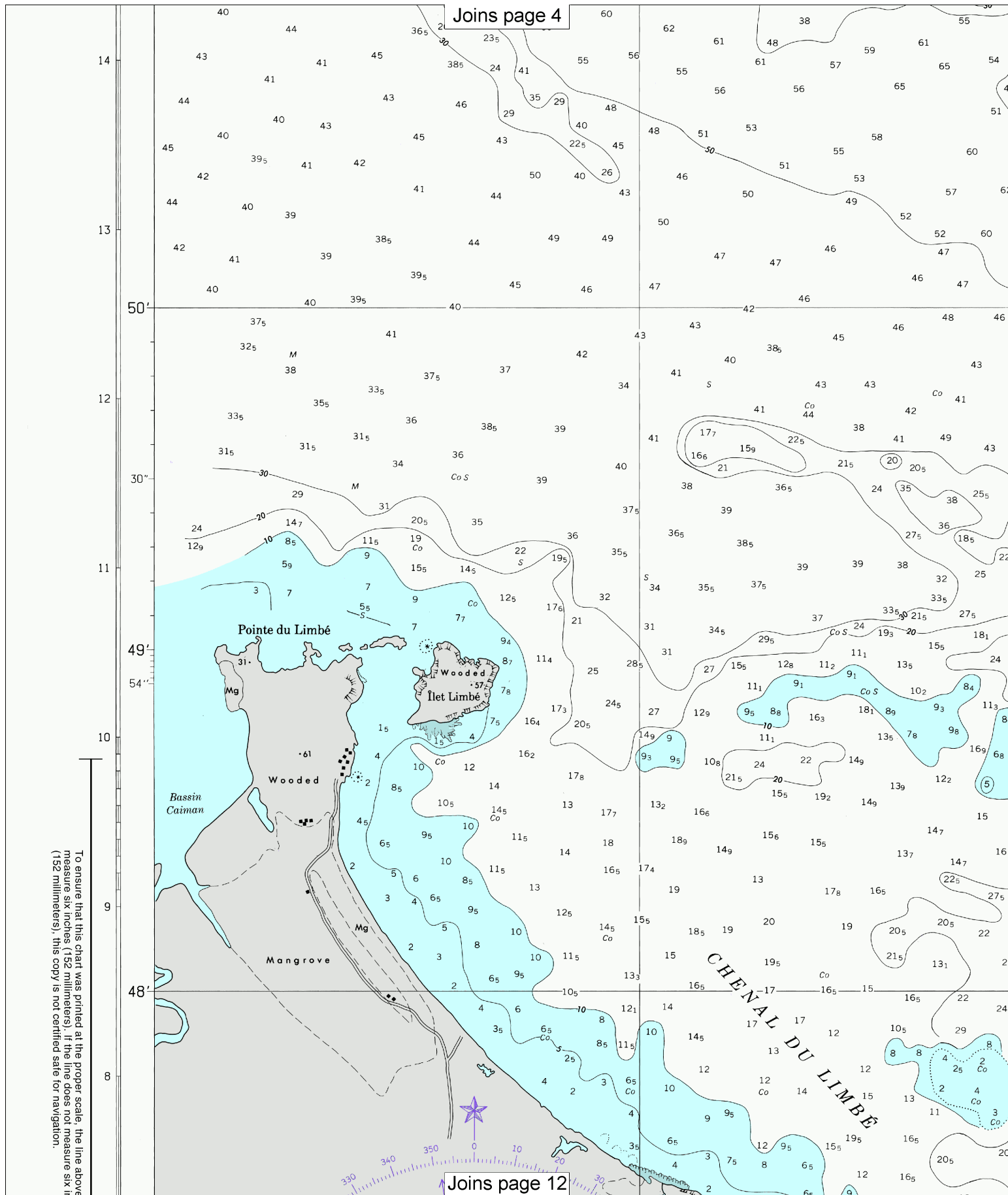


NSN 7642014012150
NGA Ref No. 26XHA26148

ED. NO. 004

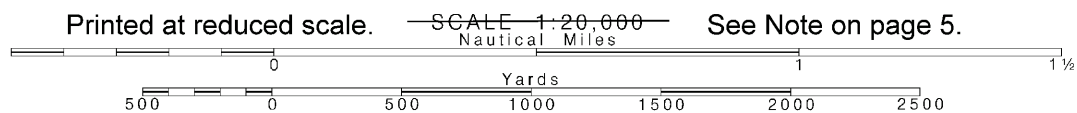
(152 millimeters), this copy is not certified safe for navigation.

7



8

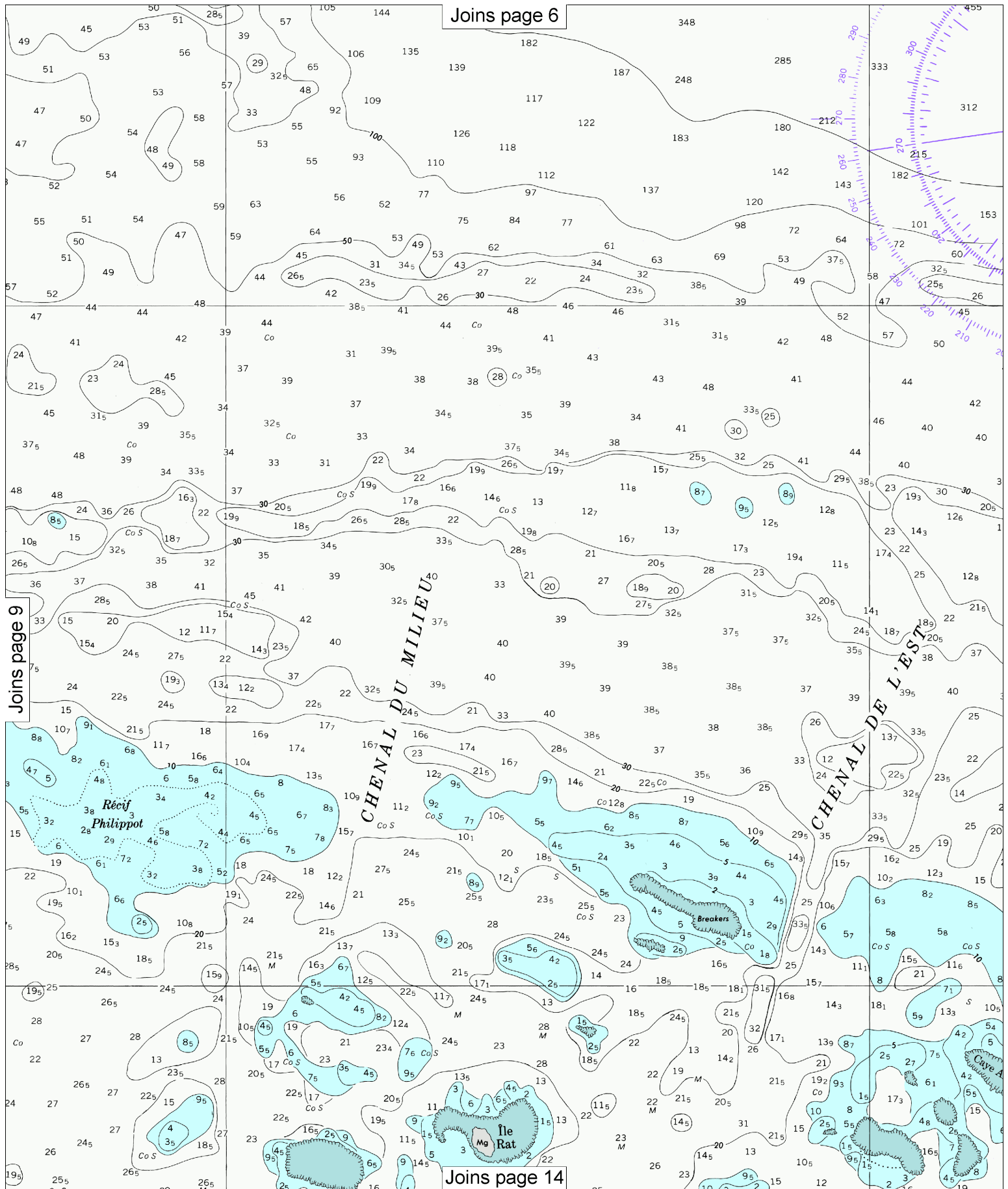
Note: Chart grid lines are aligned with true north.



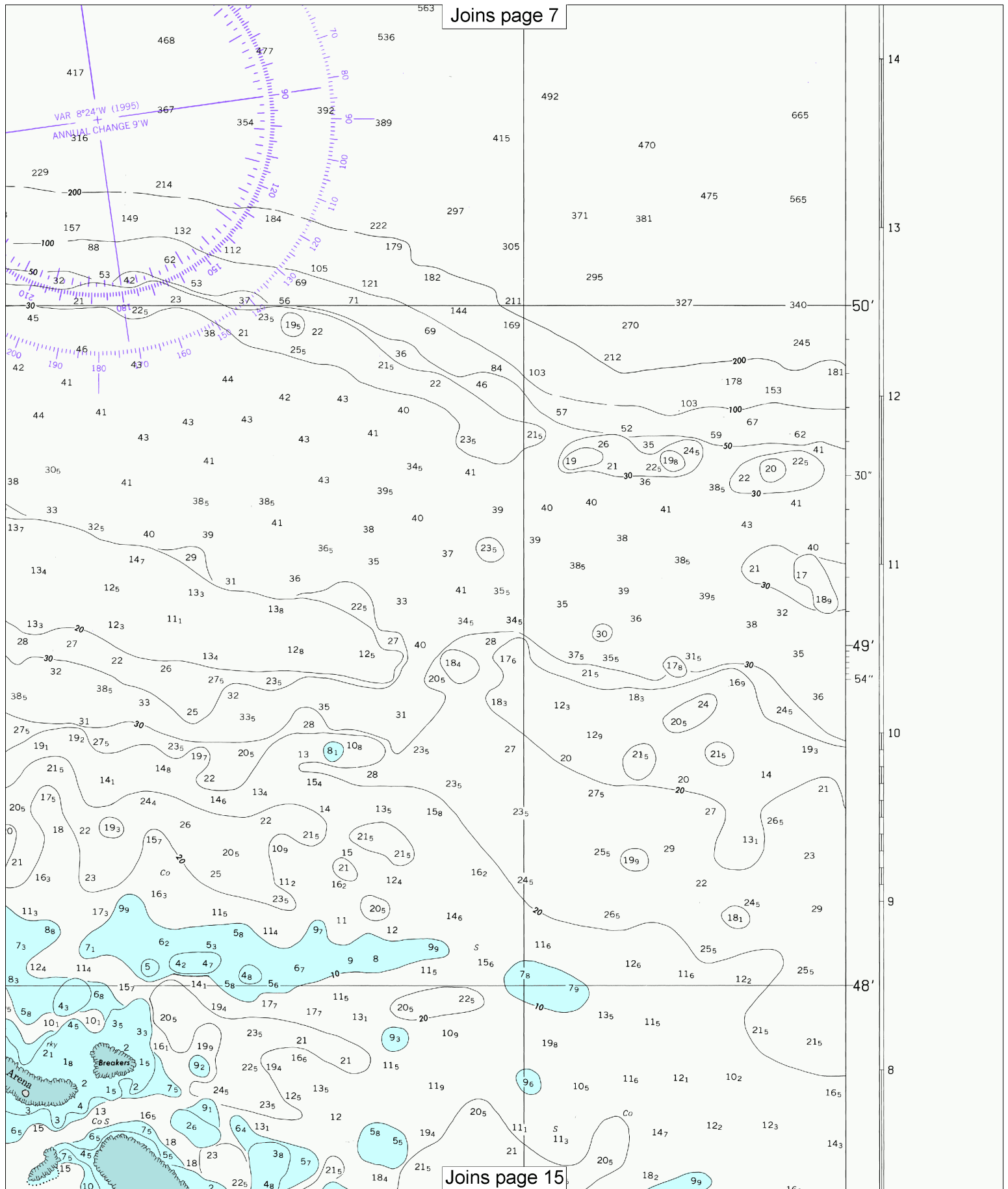
Joins page 5

Joins page 10

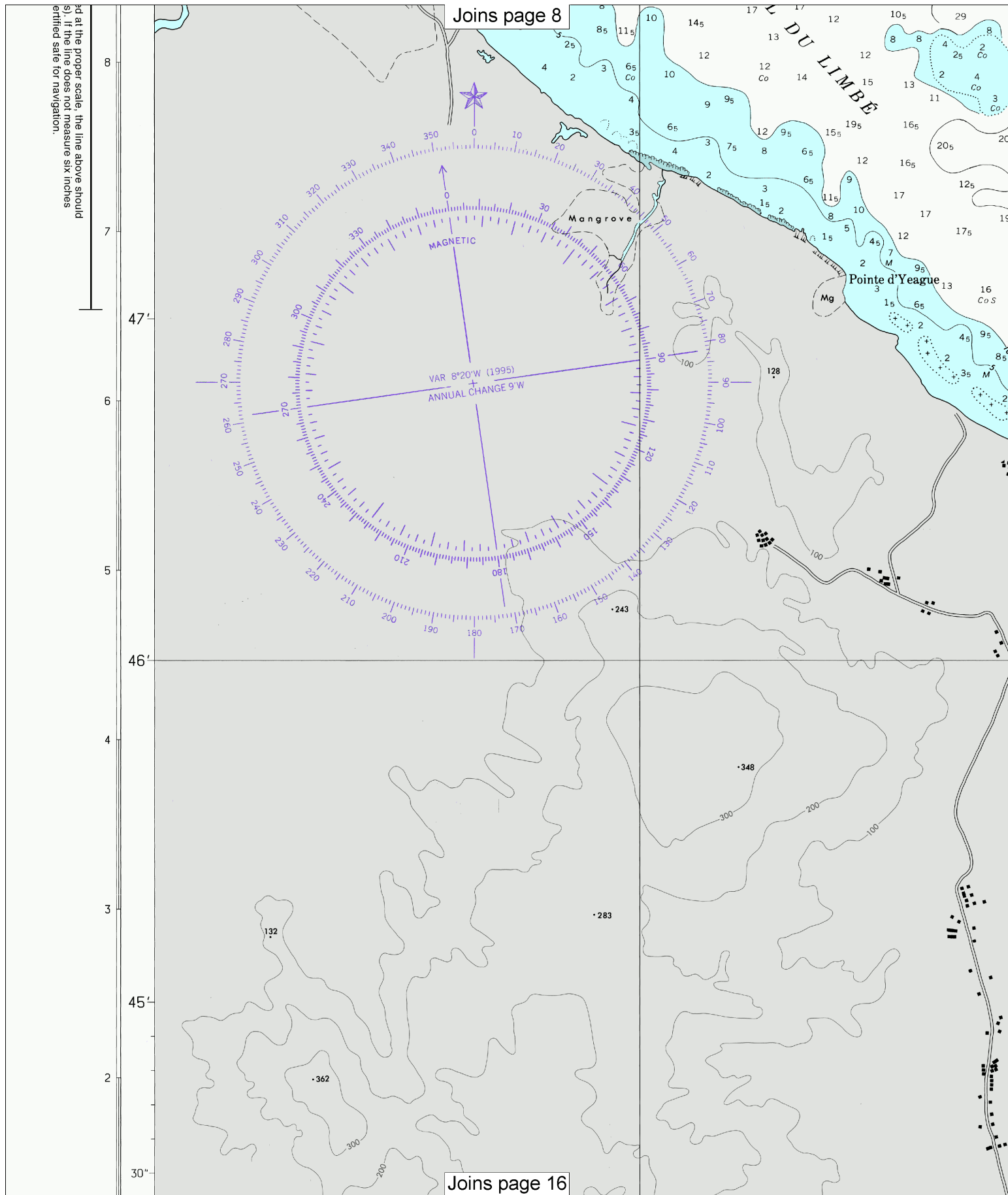
Joins page 13

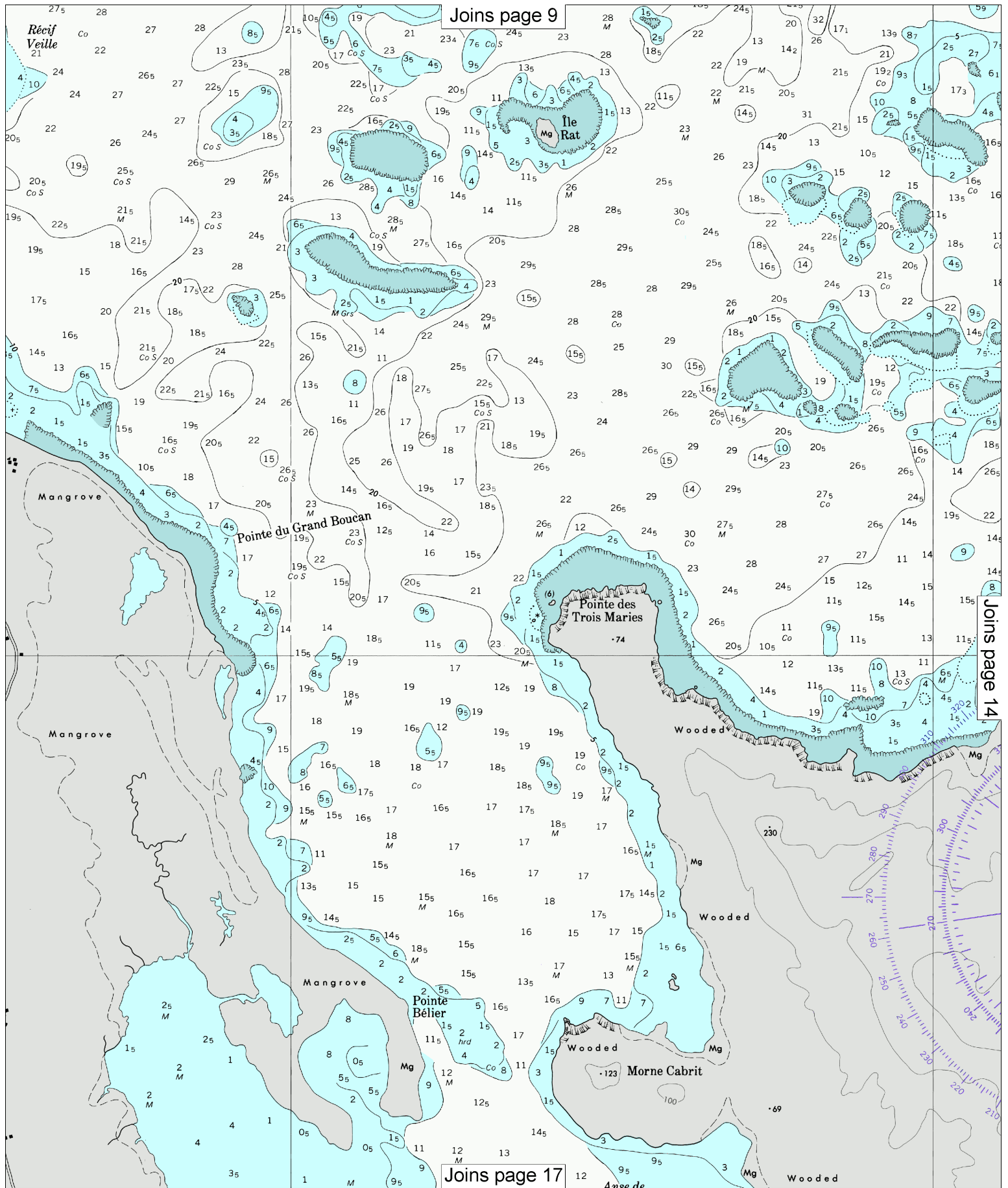


Joins page 7

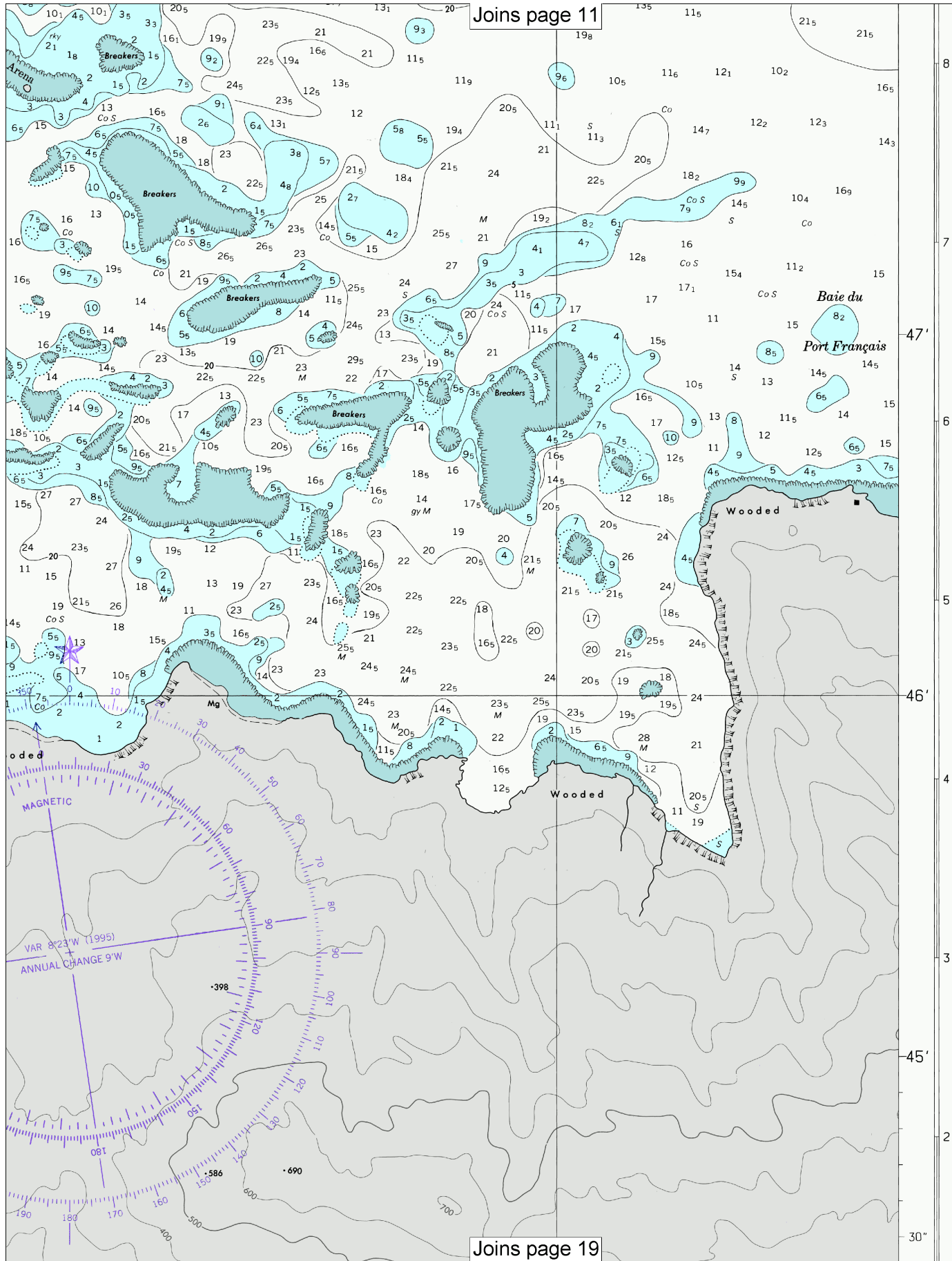


Joins page 15





Joins page 11



Joins page 19

LOGARITHMIC SPEED SCALE
To find SPEED, place one point of dividers on nautical miles run and the other on minutes run. Without changing divider spread, place right point on 60 and left point will then indicate speed in knots. Example: with 4.0 miles run in 15 minutes, the speed is 16.0 knots.

YARDS (IN THOUSANDS)

19° 43'

42'

4th Ed., Feb. 4, 1995 (Correct through NM 5/95)

26148

NSN 7642014012150
NGA Ref No. 26XHA26148

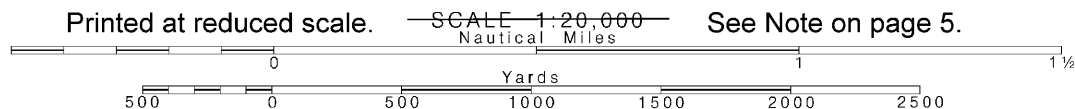
ED. NO. 004

SOUNDINGS IN METERS

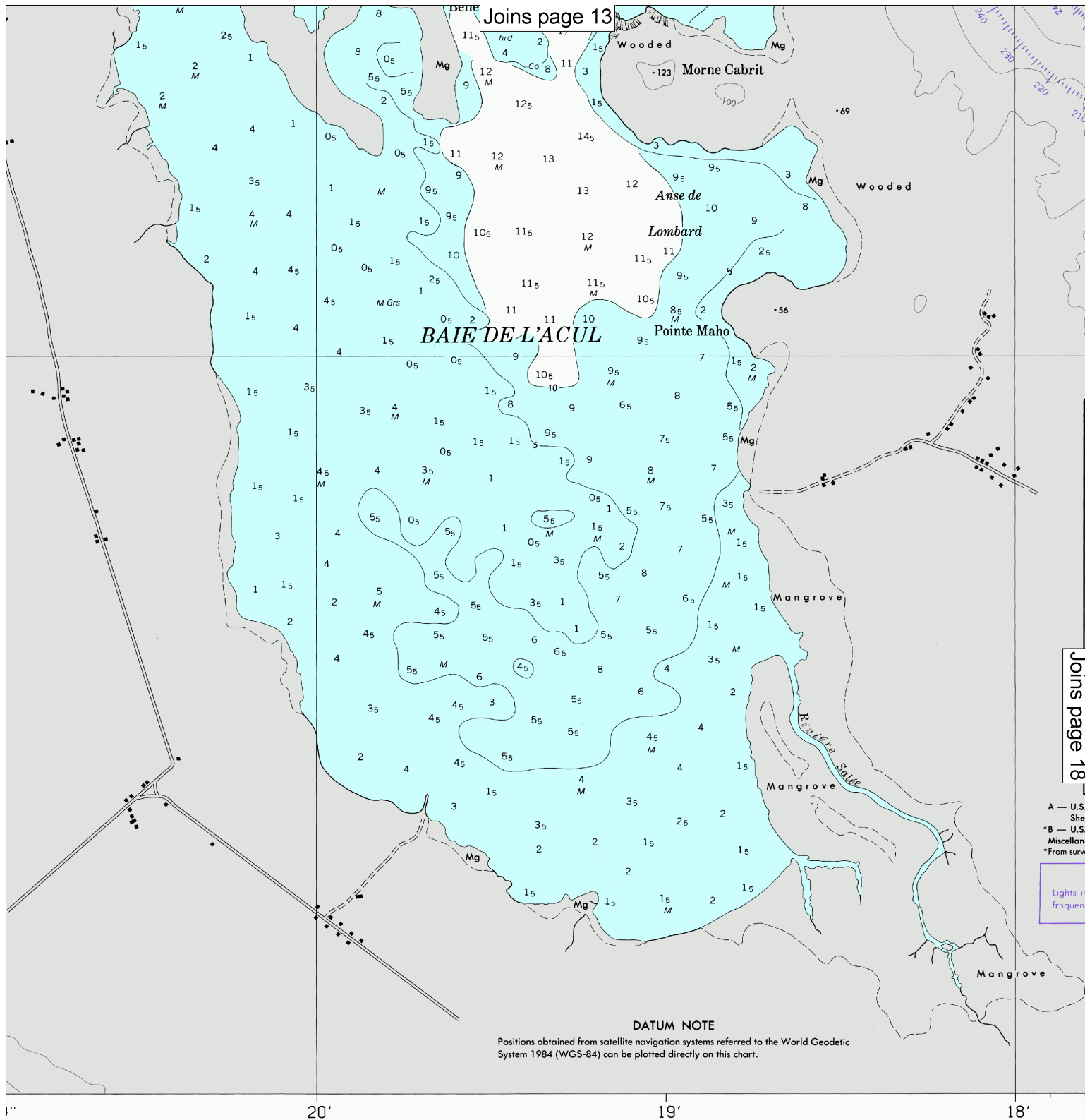
To ensure that this chart was printed at the proper scale, the line above should measure six inches (152 millimeters). If the line does not measure six inches (152 millimeters), this copy is not certified safe for navigation.

16

Note: Chart grid lines are aligned with true north.



Joins page 13



Joins page 18

A — U.S. Sheet
*B — U.S. Miscellaneous
*From survey

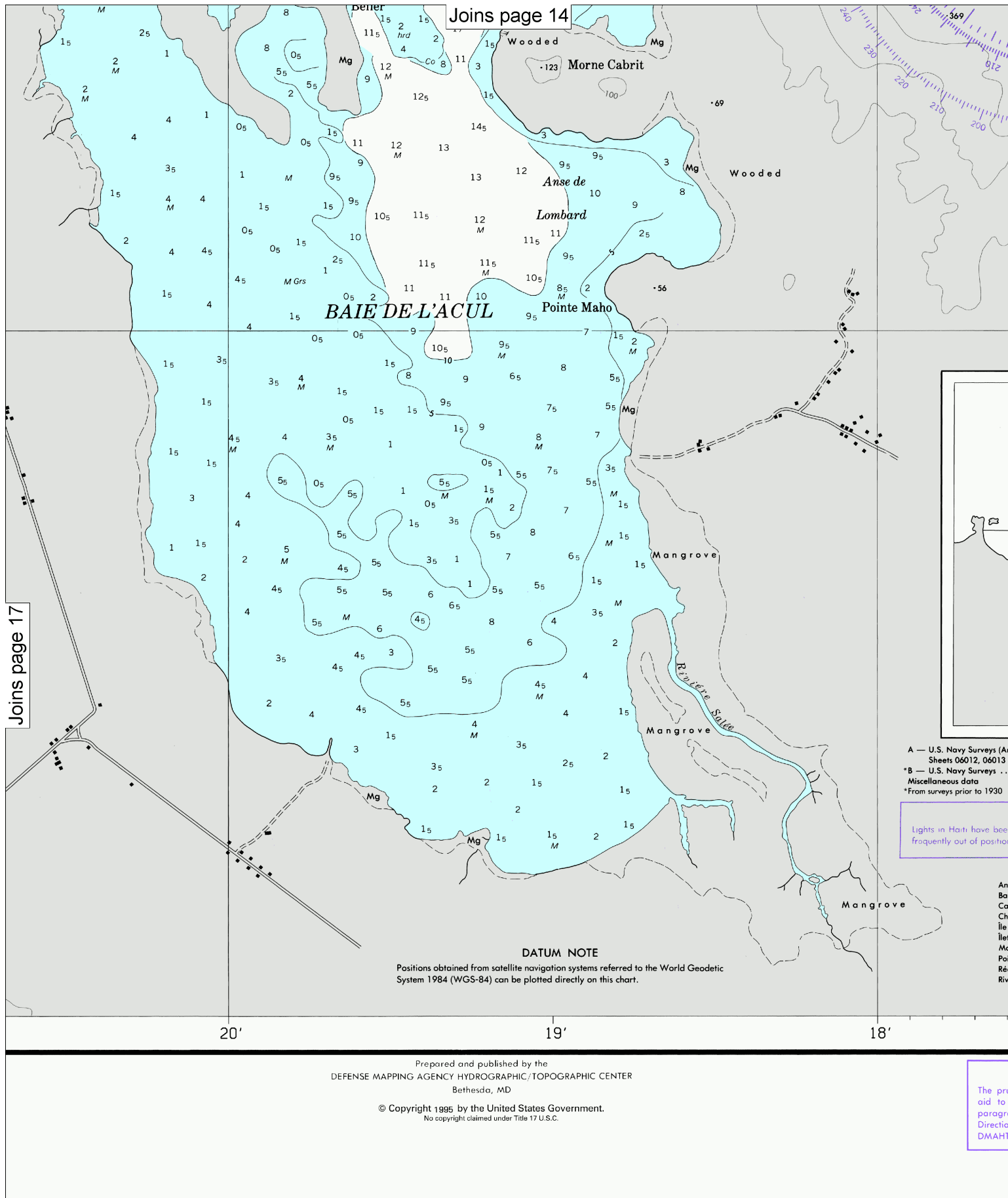
Lights in
frequent

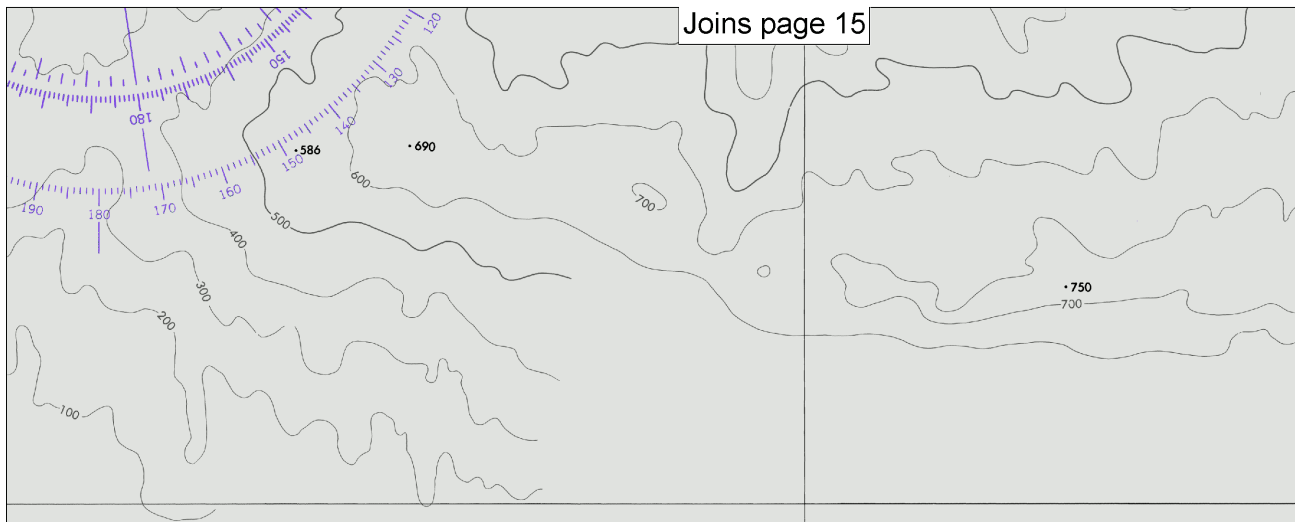
DATUM NOTE

Positions obtained from satellite navigation systems referred to the World Geodetic System 1984 (WGS-84) can be plotted directly on this chart.

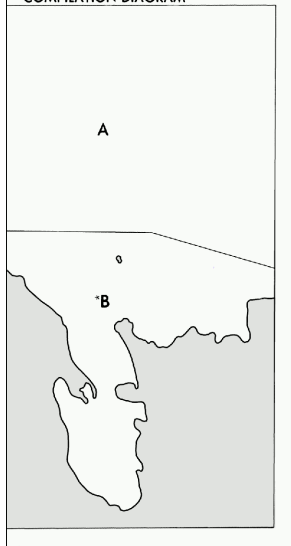
Prepared and published by the
DEFENSE MAPPING AGENCY HYDROGRAPHIC/TOPOGRAPHIC CENTER
Bethesda, MD

© Copyright 1995 by the United States Government.
No copyright claimed under Title 17 U.S.C.





COMPILATION DIAGRAM



Archive No. 825018)
 1:25,000, 1982
 1915, 1916

CAUTION

When reported extinguished or unreliable and buoys are on

GLOSSARY

anse cove
 baie bay
 caye island
 chenal channel
 P island
 pt island
 borne mountain, headland
 pointe point, headland, cape
 récif reef
 rivière stream



WEST INDIES

HAITI — NORTH COAST

BAIE DE L'ACUL AND APPROACHES

From U.S. Navy surveys to 1982

SOUNDINGS IN METERS
 (Under 20 in meters and decimeters)
 (meters and half meters to 40)

reduced to the approximate level of Mean Low Water

HEIGHTS IN METERS ABOVE MEAN SEA LEVEL
 Contour interval 100 meters

For Symbols and Abbreviations, see Chart No. 1

MERCATOR PROJECTION

WORLD GEODETIC SYSTEM 1984 (WGS-84)

SCALE 1:20,000

TIDAL INFORMATION

Place	Height above datum of soundings			
	Mean High Water		Mean Low Water	
	Higher	Lower	Lower	Higher
Cap-Haïtien Harbor	meters ...0.6...	meters ...0.4...	meters ...-0.1...	meters ...0.0...

CHANGES IN BUOYAGE

Certain buoys, lights, and beacons within the area of this chart will be affected by the implementation of the conversion to IALA Maritime Buoyage System in Region B. For further explanation, see annual NM I (6) and Chart No. 1.

Neatlines: 74.2 cm N-S x 106.0 cm E-W

DEPTH CONVERSION SCALE

FEET	METERS and decimeters	FATHOMS and feet
0	0	0
2	0.6	1
4	1.2	2
6	1.8	3
8	2.4	4
10	3.0	5
12	3.6	6
14	4.2	7
16	4.8	8
18	5.4	9
20	6.0	10
22	6.6	11
24	7.2	12
26	7.8	13
28	8.4	14
30	9.0	15
32	9.6	16
34	10.2	17
36	10.8	18
38	11.4	19
40	12.0	20
42	12.6	21
44	13.2	22
46	13.8	23
48	14.4	24
50	15.0	25
52	15.6	26
54	16.2	27
56	16.8	28
58	17.4	29
60	18.0	30
62	18.6	31
64	19.2	32
66	19.8	33
68	20.4	34
70	21.0	35
72	21.6	36
74	22.2	37
76	22.8	38
78	23.4	39
80	24.0	40
82	24.6	41
84	25.2	42
86	25.8	43
88	26.4	44
90	27.0	45
92	27.6	46
94	28.2	47
96	28.8	48
98	29.4	49
100	30.0	50

19° 43' YARDS (IN THOUSANDS)

26148

42' 15'

WARNING

udent mariner will not rely solely on any single navigation, particularly on floating aids. See graph No. 1 of Notice to Mariners No. 1 or Sailing Plans Planning Guides for information relative to TC Charts.

Baie de l' Acul and Approaches

SOUNDINGS IN METERS - SCALE 1: 20,000

USERS SHOULD REFER CORRECTIONS, ADDITIONS, AND COMMENTS TO NGA'S MARITIME OPERATIONS DESK, TOLL FREE 1-800-362-6289; COMMERCIAL, 301-227-3147; DSN 287-3147; SEND E-MAIL TO NAVSAFETY@NGA.MIL; USE CONTACT LINKS FOR DNC AND MARITIME WEBSITES LOCATED AT <http://www.nga.mil/portal/site/dnc/>; OR WRITE TO MARITIME DIVISION, NATIONAL GEOSPATIAL-INTELLIGENCE AGENCY, MAIL STOP D-44, 4800 SANGAMORE ROAD, BETHESDA, MD 20816-5003.

Chart 26148 – Baie de L’Acul and Approaches (Haiti)

Action	Charting Label	Latitude	Longitude	Published Document
Add	Note "ANCHORAGE NOTE Vessels may only anchor in charted anchorages as designated by the Dominican Republic Naval Authority. See Sailing Directions. Mariners should contact local authorities for more detailed information."	19° 42' 12" N	72° 23' 00" W	8/02
Add	Legend "See ANCHORAGE NOTE"	19° 50' 00" N	72° 22' 00" W	8/02
Add	Legend "See ANCHORAGE NOTE"	19° 46' 50" N	72° 18' 54" W	8/02
Delete	ANCHORAGE note	19° 42' 12" N	72° 23' 00" W	13/02
Delete	Legend "See ANCHORAGE NOTE"	19° 50' 00" N	72° 22' 00" W	13/02
Delete	Legend "See ANCHORAGE NOTE"	19° 46' 50" N	72° 18' 54" W	13/02
Add	Legend "See ANCHORAGE NOTE"	19° 50' 00" N	72° 22' 00" W	8/02