

A world map with a dark background, overlaid with a dense network of blue and purple lines representing bathymetry data. The lines are most concentrated in the Atlantic and Pacific Oceans, with some lines extending into the Indian Ocean and the Mediterranean. The map shows the outlines of continents and major countries, with labels for Canada, United States, Mexico, Venezuela, Colombia, Peru, Bolivia, Brazil, Algeria, Libya, Egypt, Saudi Arabia, Ethiopia, Tanzania, Angola, Zambia, Mozambique, Germany, Poland, Ukraine, Turkey, Iran, Kazakhstan, Mongolia, China, India, Myanmar, and Burma.

# IHO Crowdsourced Bathymetry Initiative

An IHO-led collaborative project to better enable mariners and professionally manned vessels to collect “crowdsourced bathymetry”

***[bathydata@iho.int](mailto:bathydata@iho.int)***



International Hydrographic Organization  
*Organisation Hydrographique Internationale*

MACHC 20



A world map with a dark background, overlaid with a dense network of thin, light blue lines representing bathymetry data. The lines are most concentrated in the oceans, particularly around the continents of North America, Europe, and Africa. The map includes labels for various countries and regions in a light blue font. The text is centered over the Atlantic Ocean.

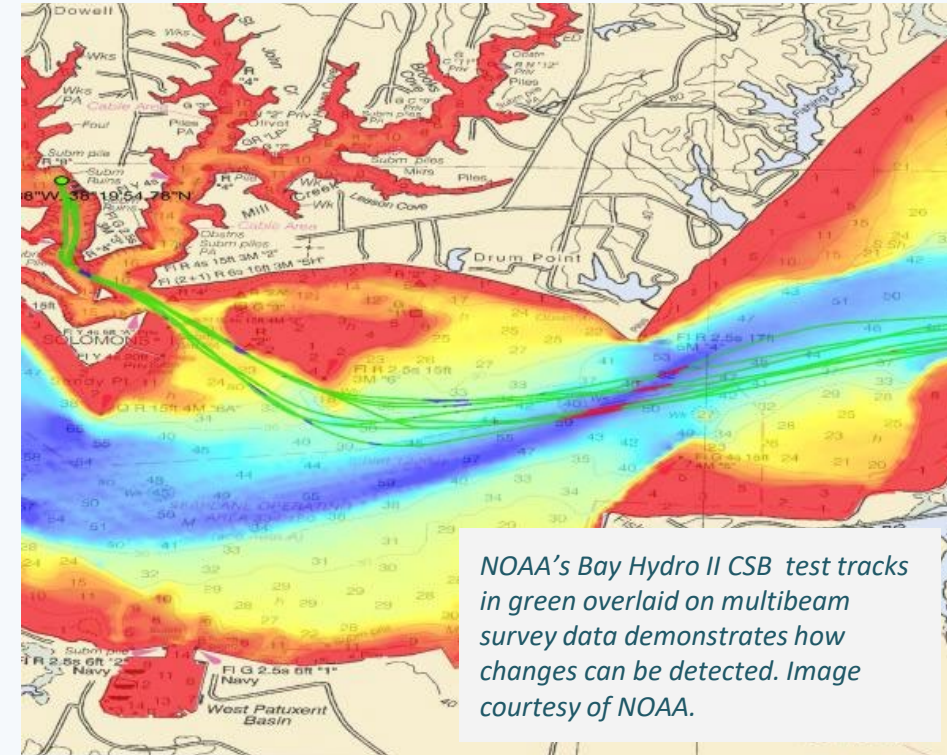
**Crowdsourced bathymetry (CSB) is the collection of depth measurements from vessels, using standard navigation instruments, while engaged in routine maritime operations.**



# The Role of CSB Data:

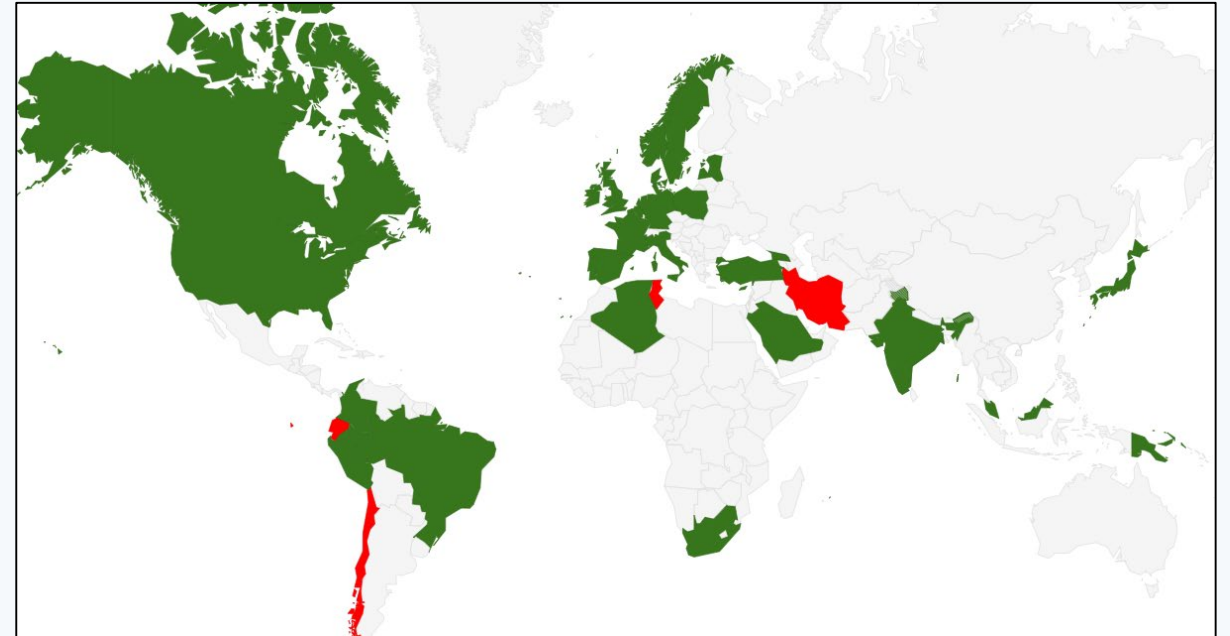
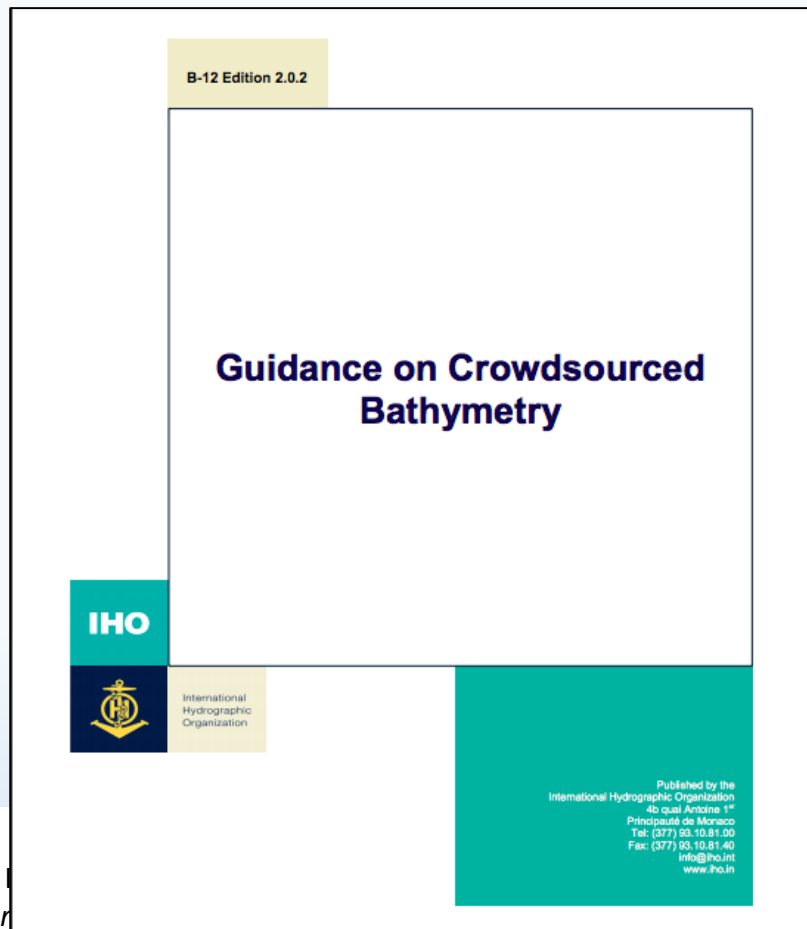
*Valuable data with scientific, commercial & research value at no cost to the public sector*

- Support national and regional development activities
- Fill gaps where data is scarce
- Useful along shallow, complex coastlines that are difficult for traditional survey vessels to access and may be more frequently visited by recreational boaters
- Identify uncharted features
- Assist in verifying charted information
- Confirm whether charts are appropriate for the latest traffic patterns.



***...but only if vessels collect and donate depth information while on passage***

## “CALL FOR APPROVAL OF EDITION 2.0.0 OF IHO PUBLICATION B-12”



35 Member States approved the  
adoption of B-12 out of 38 replies.

# IHO CL 11/2019 Annex B

## “ACCEPTANCE OF CROWDSOURCED BATHYMETRY ACTIVITIES IN NATIONAL WATERS OF JURISDICTION”

- 13 IHO MS have replied “positive”
  - CL 47/2019 provides a summary analysis of positive responses ==>
- The IHO DCDB will filter out CSB data collected from the waters of **all coastal countries not included on the positive list**. This includes:
  - MS we believe are pro-CSB but have not replied
  - Coastal countries that are not IHO MS

### Summary analysis of positive responses

1. Based on the comments received to the questionnaire in Annex B to IHO CL 11/2019, the following table will be published as the Positive List to guide potential data gathering activities undertaken by the wider maritime community in waters of national jurisdiction:

Member State	Area	Specific actions required
Argentina	EEZ only	Provide copy of dataset to Hydrographic Office
Brazil	EEZ only	Provide copy of dataset to Hydrographic Office
Cyprus	All waters	Provide copy of dataset to Hydrographic Office
Denmark	All waters	Inform Hydrographic Office of any variance with published chart
Georgia	All waters	Provide copy of dataset to Hydrographic Office
Germany	All waters	Inform Hydrographic Office of new dataset
Monaco	All waters	Provide copy of dataset to Hydrographic Office
Netherlands	All waters	Inform Hydrographic Office of new dataset
New Zealand	All waters	Inform Hydrographic Office of new dataset
Norway	All waters – no multibeam activity without prior permission	Inform Hydrographic Office of new dataset
Philippines	Shipping routes and transit passages only	None
South Africa	EEZ only	Provide copy of dataset to Hydrographic Office
Sweden	EEZ only	Inform Hydrographic Office of new dataset
USA	All waters	None





# IHO Member States:

The IHO encourages member states who have not responded to review Annex B CL 11/2019 and, if possible, offer a positive response before the Assembly.

Note: A MS can include "conditions" or "prerequisites" as needed.



## Summary analysis of positive responses

1. Based on the comments received to the questionnaire in Annex B to IHO CL 11/2019, the following table will be published as the Positive List to guide potential data gathering activities undertaken by the wider maritime community in waters of national jurisdiction:

Member State	Area	Specific actions required
Argentina	EEZ only	Provide copy of dataset to Hydrographic Office
Brazil	EEZ only	Provide copy of dataset to Hydrographic Office
Cyprus	All waters	Provide copy of dataset to Hydrographic Office
Denmark	All waters	Inform Hydrographic Office of any variance with published chart
Georgia	All waters	Provide copy of dataset to Hydrographic Office
Germany	All waters	Inform Hydrographic Office of new dataset
Monaco	All waters	Provide copy of dataset to Hydrographic Office
Netherlands	All waters	Inform Hydrographic Office of new dataset
New Zealand	All waters	Inform Hydrographic Office of new dataset
Norway	All waters – no multibeam activity without prior permission	Inform Hydrographic Office of new dataset
Philippines	Shipping routes and transit passages only	None
South Africa	EEZ only	Provide copy of dataset to Hydrographic Office
Sweden	EEZ only	Inform Hydrographic Office of new dataset
USA	All waters	None

# Non-IHO Coastal States:

---

The IHO encourages all coastal states of the MACHC to provide their position on CSB Activity in their areas of national jurisdiction to the MACHC Seabed 2030 Coordinator as soon as possible.

Note: A Coastal State can include "conditions" or "prerequisites" as needed.



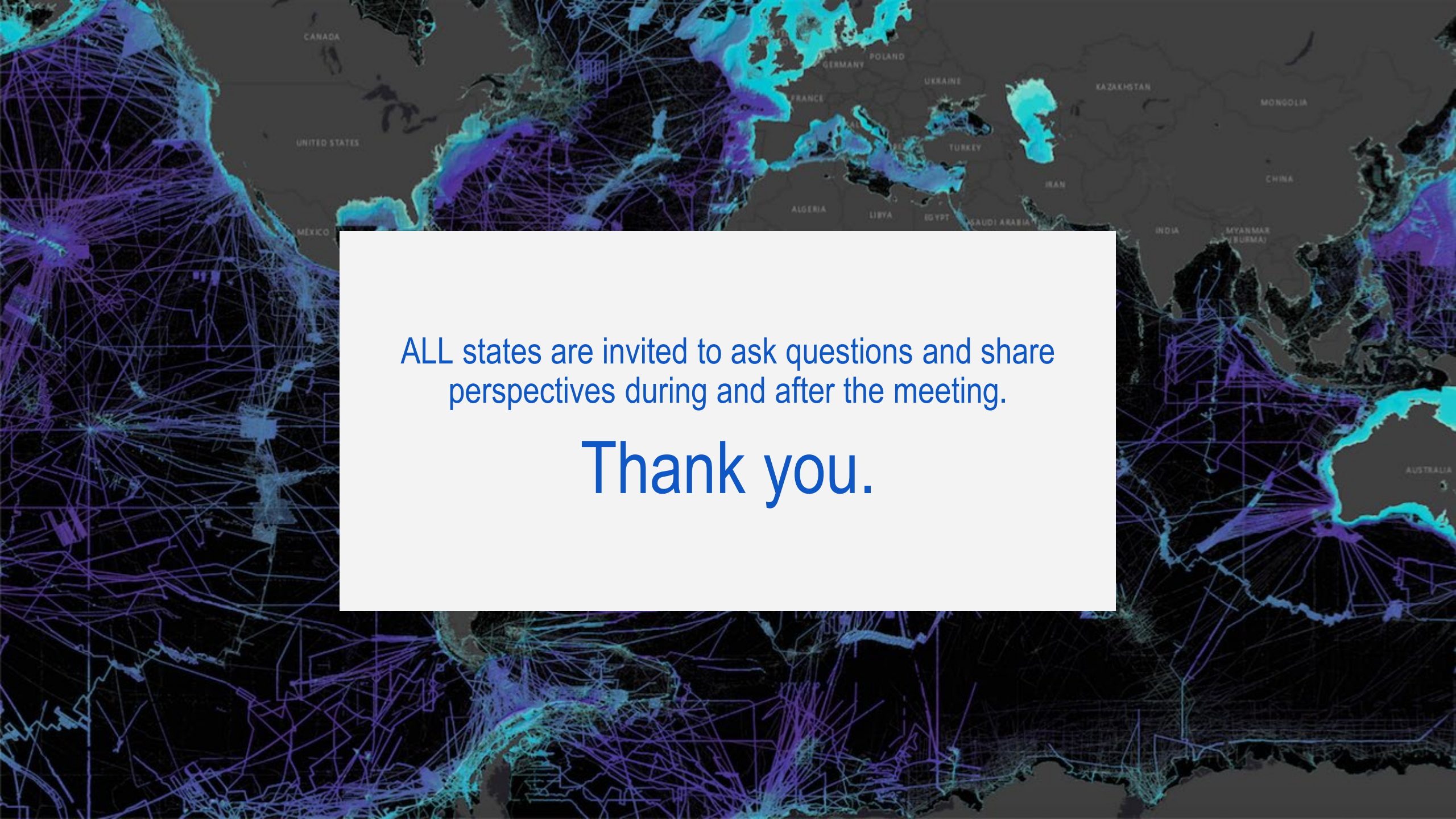
# RHCs should consider designating a SB 2030 representative to:

---

- Liaise with appropriate GEBCO Seabed 2030 Regional Data Assembly and Coordination Centres
- Consider traditional hydrographic collection methods as well as others that may apply, including CSB, SDB, scientific data collection, and industry-specific data and serve as a point of contact for other working groups accordingly.
- Report the state of regional ocean mapping efforts, including national statistics (according to Reg. Centre data)
- Lead regional efforts to coordinate potential data collection opportunities, connecting data providers with the appropriate GEBCO Regional Centres.
- Encourage national commitments for data sharing and new data collection.
- Develop joint regional campaign mapping plans for areas outside national jurisdiction.
- Ensure that efforts to collect data for Seabed 2030 are coordinated within the region
- Place a strong emphasis on acknowledging participation from data providers.





A world map with a dark background, overlaid with a complex network of glowing blue and purple lines. These lines represent connections between various geographical locations, with a particularly dense web of connections in North America and Europe. The map includes labels for several countries: CANADA, UNITED STATES, MEXICO, FRANCE, GERMANY, POLAND, UKRAINE, KAZAKHSTAN, MONGOLIA, TURKEY, IRAN, CHINA, ALGERIA, LIBYA, EGYPT, SAUDI ARABIA, INDIA, MYANMAR (BURMA), and AUSTRALIA.

ALL states are invited to ask questions and share perspectives during and after the meeting.

Thank you.