

UNCLASSIFIED

02H001

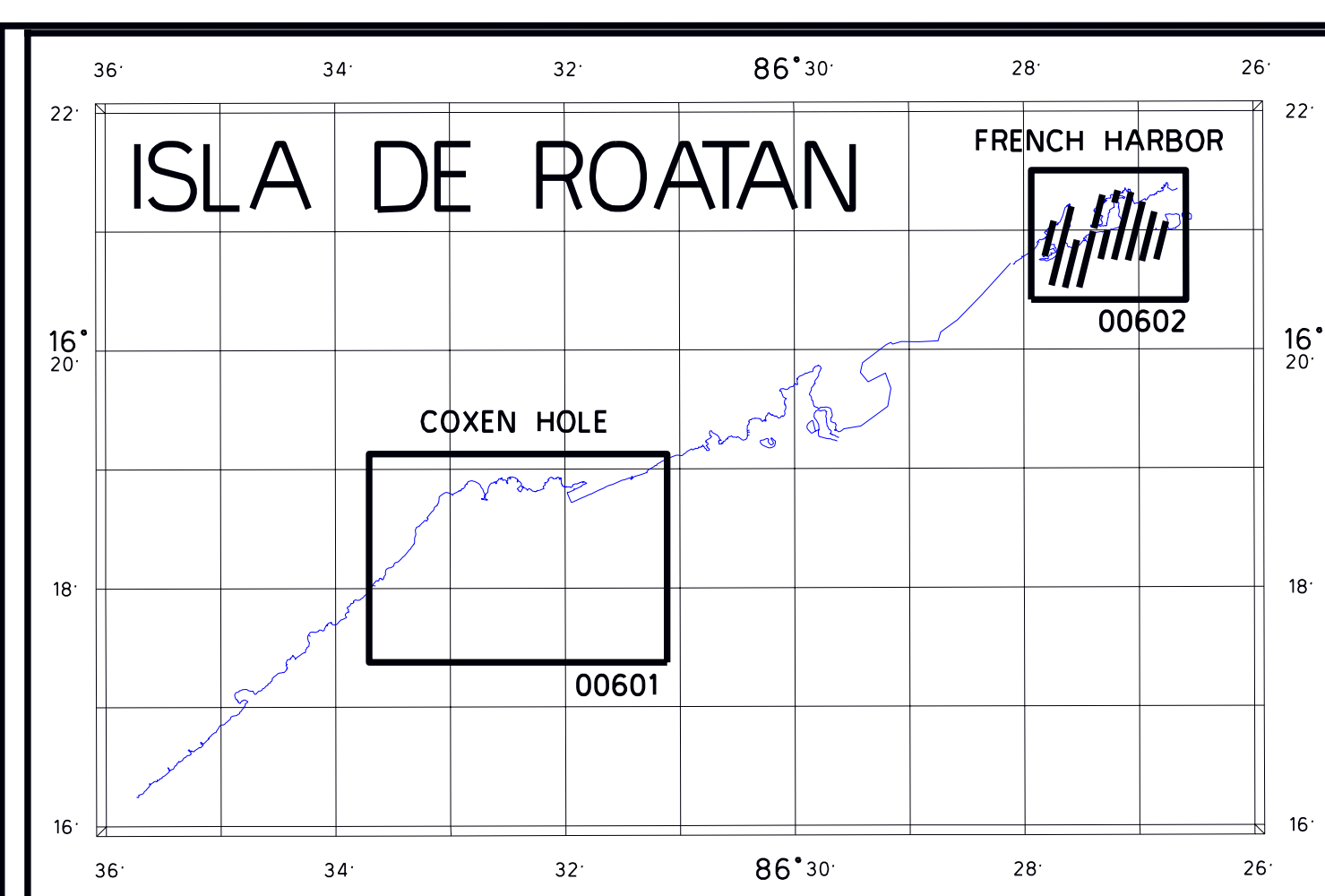
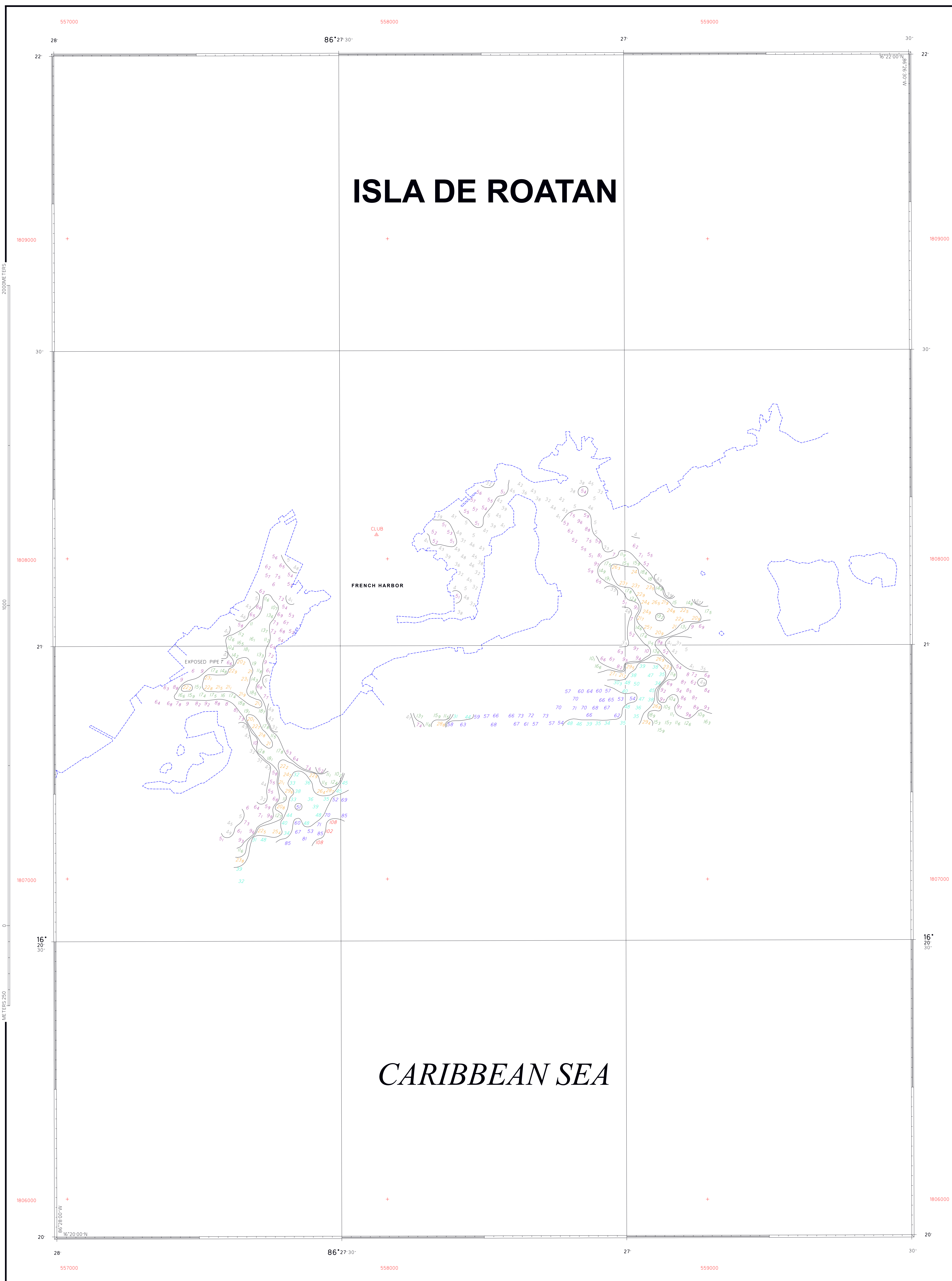
20900

DISTRIBUTION STATEMENT E:

DISTRIBUTION AUTHORIZED TO DOD COMPONENTS ONLY  
FOREIGN GOVERNMENT INFORMATION: 20 DECEMBER 2002  
OTHER REQUESTS SHALL BE REFERRED TO:  
COMMANDING OFFICER, NAVAL OCEANOGRAPHIC OFFICE  
RELEASABLE TO HONDURAS

FOREIGN GOVERNMENT INFORMATION

THIS INFORMATION MAY NOT BE RELEASED TO A  
THIRD COUNTRY/PARTY WITHOUT PRIOR APPROVAL  
OF THE COMMANDING OFFICER, NAVAL  
OCEANOGRAPHIC OFFICE AND REPUBLIC OF  
HONDURAS, EMPRESA NACIONAL PORTUARIA.



**REPUBLIC OF HONDURAS**  
**CARIBBEAN SEA**  
**FRENCH HARBOR**

**SURVEYED BY**  
**THE EMPRESA NACIONAL PORTUARIA**  
**AND THE**  
**NAVAL OCEANOGRAPHIC OFFICE**  
**INTERNATIONAL DIVISION**

2002

**SOUNDINGS IN METERS**  
**SCALE 1:5,000**

**SURVEY INFORMATION**

**PROJECTION : UNIVERSAL TRANSVERSE MERCATOR**  
**GEODETTIC DATUM : WGS-84**  
**ELLIPSOID : WGS-84 GRID : UTM ZONE : 16**  
**SOUNDING DATUM : APPROXIMATE MEAN LOWER LOW WATER**  
**VERTICAL DATUM : MEAN SEA LEVEL**  
**POSITIONING / ECHOSOUNDING SYSTEMS : DGPS / SINGLE BEAM**

**TIDAL INFORMATION**

PLACE	HEIGHT ABOVE SOUNDING DATUM ADJUSTED TO CHART DATUM				TIDE CHARACTERISTICS
	MEAN HIGH WATER	MEAN SEA LEVEL	MEAN LOW WATER	MIXED TIDES, PREVAILING SEMI-DIURNAL	
COXEN HOLE PIER 16° 18' 45.0" N 086° 32' 41.3" W	HIGHER LEVEL 0.50 METERS	LOWER LEVEL 0.40 METERS	HIGHER LEVEL 0.20 METERS	LOWER LEVEL 0.10 METERS	

**WORK RECORD**

PROJECTION	CHECKED FORREST NOLL	VALIDATED ROGER WHITTEN
NAVIGATION	EDITED FORREST NOLL	VALIDATED ROGER WHITTEN
SOUNDINGS	EDITED FORREST NOLL	VALIDATED ROGER WHITTEN
DEPTH CURVES	EDITED FORREST NOLL	VALIDATED ROGER WHITTEN
SHORELINE & AIDS TO NAV.	POSITIONED NIMA / NAVO	VALIDATED NIMA / NAVO
SHEET EVALUATION	CHECKED FORREST NOLL	VALIDATED ROGER WHITTEN
SHOALS	CHECKED FORREST NOLL	VALIDATED ROGER WHITTEN
TEAM REVIEW	BY ROGER WHITTEN, FORREST NOLL, DAVID MELHUISH	
FINAL REVIEW	BY ROGER WHITTEN, SNR	
APPROVED	BY STANLEY HARVEY, DIR, CARIBBEAN & LATIN AMERICAN BRANCH	

IHO SP 44 4 <sup>th</sup> Edition	ORDER 1
Horizontal Accuracy (95% Confidence Level)	5m + 5% Of Depth
Depth Accuracy for Reduced Depths (95%) @ 60m	1.6m
100% Bottom Search	0.60m
System Detection Capability @ 100m range	0.55m
Side Scan Sonar	Required In Channel
Maximum Line Spacing	NO
Fixed Aids To Navigation	Cubic Features > 2m
Natural Coastline	N/A
Mean Position Of Floating Aids To Navigation	3x Average Depth Or 25m
Topographical Features	25m
	2m
	1.6m
	20m
	NIMA, NAVO
	DGPS
	10m
	1.6m
	20m
	NO

Values in Green represent the accuracies achieved for this survey.  
 Soundings have been corrected for sound velocity variations.  
 Observed tides were applied to soundings.  
 Areas less than 6m were not surveyed due to the draft of the boat. Most of these areas contain coral outcroppings. These outcroppings are covered at low tide.  
 No Side Scan Sonar operations were performed in this area.  
 This survey does not meet IHO Order 1 specifications for system detection capability.  
 The survey was conducted from 3 September to 8 October 2002.

00602

02H001

UNCLASSIFIED